



VUBA

Valvole di sicurezza per tubazioni
Hose burst valves

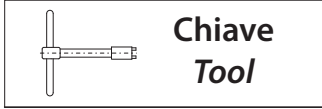
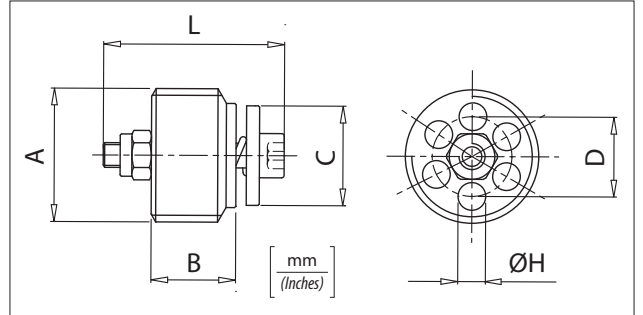
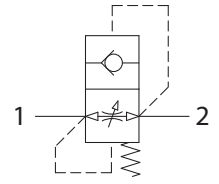


Dati tecnici Technical data

Olio idraulico Mineral oil	ISO 6743/4 DIN 51524
Viscosità fluido Fluid viscosity	10-500 mm ² /s 45 to 2000 ssu (6 to 420 cSt)
Classe di contaminazione max con filtro Max contamination index with filter	ISO 4406:1999 Classe 19/17/14
Temperatura del fluido Fluid temperature	-20°C +80°C -4°F + 176°F
Temperatura ambiente Ambient temperature	-20°C +50°C -4°F + 122°F

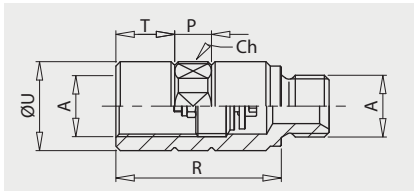
È indispensabile l'utilizzo di un filtro (filtrazione consigliata 15 micron) per proteggere la valvola
It is necessary a filter use to protect the valve (advised filtration 15 micron)

Trafilamento Leakage	0 - 0,25 cm ³ /min (0-0,015 in ³)
-------------------------	---



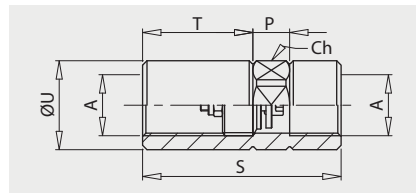
Dimensione / Dimensions

Codice Code	A	Peso / Kg Weight / lb
61700001	VUBA 140	0,12 (0.27)
61700002	VUBA 380	0,13 (0.29)
61700003	VUBA 120	0,15 (0.33)
61700004	VUBA 340	0,18 (0.40)



Colonneta / Housing M/F

Codice Code	A	R	P	T	U	Ch.	Peso / Kg Weight / lb
61100087	BSPP 1/4	39 (1.53)	10 (0.39)	13 (0.51)	20.5 (0.80)	19 (0.75)	0.07 (0.16)
61100088	BSPP 3/8	45 (1.77)	10 (0.39)	16 (0.63)	24.5 (0.96)	22 (0.87)	0.09 (0.20)
61100089	BSPP 1/2	52 (2.05)	10 (0.39)	19 (0.75)	29.5 (1.16)	27 (1.06)	0.15 (0.33)
61100090	BSPP 3/4	61 (2.40)	12 (0.47)	23 (0.90)	35.5 (1.32)	32 (1.26)	0.23 (0.50)
61100091	BSPP 1	67 (2.63)	15 (0.59)	25.5 (1)	44.5 (1.75)	41 (1.61)	0.3 (0.65)



Colonneta / Housing F/F

Codice Code	A	R	P	T	U	Ch.	Peso / Kg Weight / lb
61100092	BSPP 1/4	39 (1.53)	10 (0.39)	13 (0.51)	20.5 (0.80)	19 (0.75)	0.07 (0.16)
61100093	BSPP 3/8	54 (2.13)	10 (0.39)	30 (1.18)	24.5 (0.96)	22 (0.87)	0.09 (0.20)
61100094	BSPP 1/2	73 (2.87)	10 (0.39)	46.5 (1.83)	29.5 (1.16)	27 (1.06)	0.14 (0.30)
61100095	BSPP 3/4	74 (2.91)	12 (0.47)	44 (1.73)	35.5 (1.32)	32 (1.26)	0.22 (0.48)

Codice ordinazione / Ordering code

VUBA - X - Y - K

X Dimensione
Size

140 BSPP 1/4

380 BSPP 3/8

120 BSPP 1/2

340 BSPP 3/4

100 BSPP 1

K Foro sul piattello
Hole on flat poppet

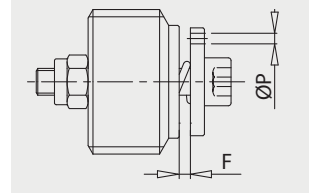
Esempio: foro 1,5 mm
Example: hole 1,5 mm

P 1,5
Omettere se non richiesto
Omit if not required

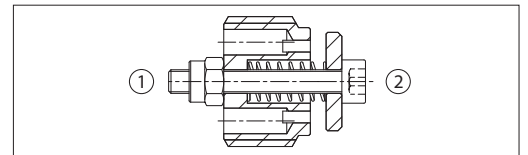
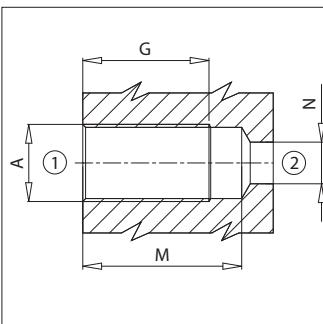
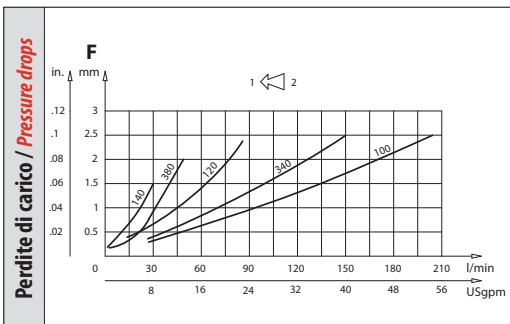
Y Regolazione
Setting

Esempio:
regolazione 0,7 mm
Example: setting 0.7mm

F 0,7
Omettere se non richiesto
Omit if not required



Regolazione F a richiesta
F setting on request
Foro su piattello a richiesta
Hole on flat poppet on request



Caratteristiche tecniche / Technical performances

Codice Code	A	Portata max Max Flow l/min-USgpm	Pressione Max Max pressure bar/PSI	B	C	D	G	H	L	M	N	Coppia di serraggio Tightening torque Nm / lbt in	Peso approssimativo Approx weight Kg / lb
VUBA 140	BSPP 1/4	25 (6.5)	350 (5000)	8,2 (0.32)	10,4 (0.41)	8 (0.31)	25 (0.98)	2,5 (0.10)	19 (0.75)	35 (1.38)	7 (0.28)	2 (1.5)	0,007 (0.016)
VUBA 380	BSPP 3/8	50 (13)		11 (0.43)	12,7 (0.50)	10 (0.39)	30 (1.18)	3,25 (0.13)	23 (0.90)	41 (1.61)	9,5 (0.37)	3 (2.5)	0,013 (0.029)
VUBA 120	BSPP 1/2	80 (21)		13 (0.51)	15 (0.59)	11,5 (0.45)	33 (1.30)	4 (0.16)	29 (1.14)	46 (1.81)	12 (0.47)	4 (3)	0,024 (0.053)
VUBA 340	BSPP 3/4	150 (40)		18 (0.71)	18 (0.71)	14,5 (0.57)	42 (1.65)	5,2 (0.20)	34 (1.34)	55 (2.17)	16 (0.63)	10 (7.5)	0,054 (0.12)
VUBA 100	BSPP 1	180 (47)		20 (0.79)	26 (1.02)	19 (0.75)	48 (1.89)	7 (0.28)	40 (1.57)	63 (2.48)	22 (0.87)	12 (9)	0,1 (0.22)