

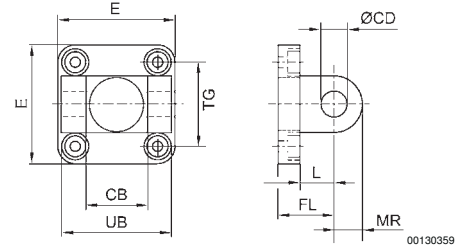
Cylinder Accessories ▶ Cylinder mountings; series CM1

## Clevis mounting, Series MP2

▶ Cylinder mounting in accordance with ISO 15552



P523\_025



Scope of delivery: clevis mounting incl. mounting screws

Part No.	Piston Ø	CB H14	Ø CD H9	E	FL ±0,2	L 1)	MR 2)	UB h13	TG	Note
<b>1827001289</b>	32	26	10	49 ±1	22	12	10	45	32,5 ±0,2	3)
<b>1827001290</b>	40	28	12	53 ±1	25	15	13	52	38 ±0,2	3)
<b>1827001291</b>	50	32	12	63 ±1	27	15	13	60	46,5 ±0,2	3)
<b>1827001500</b>	63	40	16	73 ±1	32	18	17	70	56,5 ±0,2	3)
<b>1827001293</b>	80	50	16	98 ±1	36	20	17	90	72,0 ±0,2	3)
<b>1827001294</b>	100	60	20	115 ±1	41	25	18	110	89,0 ±0,2	3)
<b>1827004862</b>	125	70	25	140	50	30	26	130	110 ±0,3	3)
<b>1827004863</b>	160	90	30	177	55	35	31	170	140 ±0,3	4) 5)
<b>1827004864</b>	200	90	30	216	60	35	31	170	175 ±0,3	4) 5)
<b>1827004865</b>	250	110	40	276	70	45	41	200	220 ±0,3	4) 5)
5239813402	320	120	45	350	80	50	45	220	270 ±0,3	4) 5)

- 1) Min.
- 2) Max.
- 3) Material: Aluminum (forged)
- 4) Material: Nodular graphite iron
- 5) Surface: galvanized