

PRORIL

50 Hz

LANDVÉLAR

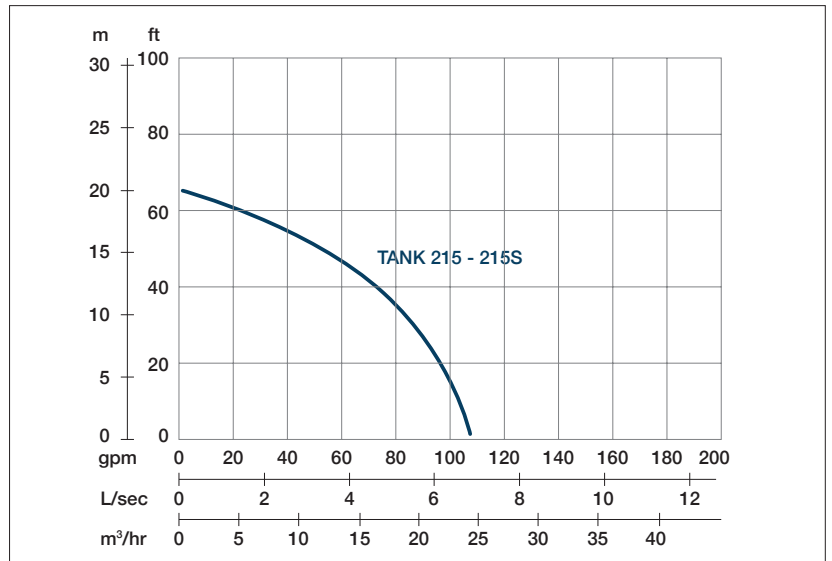
Designed for continuous operations, excellent performance and easy maintenance, PRORIL Tank series pumps have proven their reliability and durability in demanding areas like construction, mining, tunneling, quarries, industries and rental applications.

Dewatering Pump

TANK 215 - 215S

High Chrome Dewatering Pump

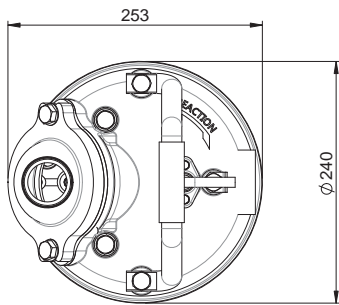




Shaft Speed : 2850rpm

Solid Passage: 9mm

Outlet : 50mm, 2in



OUTPUT

HEAD

FLOW

1.5 kW

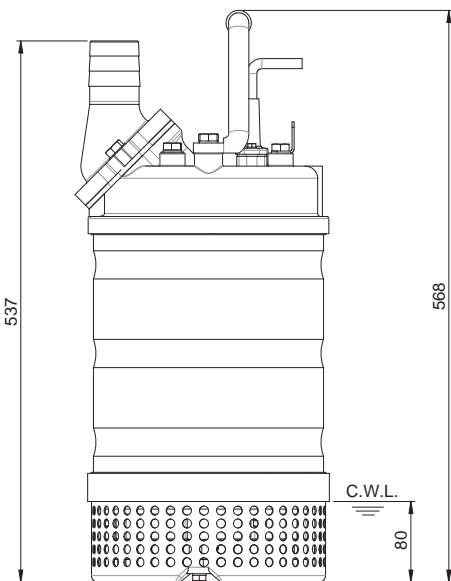
Rated : 14m, 46ft

Rated : 4.2 l/s, 66gpm

2 HP

Max : 20m, 66ft

Max : 6.7 l/s, 106gpm



Weight : 33kg / 73lbs

Pump Type		Electric Submersible Pumps
		1-Phase, 3-Phase
Motor	Type	Induction Motor
	Poles	2 Pole
	Insulation	Class F
	Protector	Circle Thermal Protector
	Starter	1-Phase • Capacitor-Run, 3-Phase • D.O.L.
Lubricant		Food Grade (ISO VG32)
Impeller Type		Opened
Shaft Seal		Double Mechanical Seal
		Silicon Carbide VS Ceramic / Carbon
Bearings		C3 Shielded ball bearings
Cable		1-Phase • H07RNF, 3-Phase • H07BQF
		Length: 20m (66ft) or longer upon request.
Materials	Pump Casing	Gray Iron
	Impeller	Chromium Iron
	Motor Frame	Stainless Steel
	Motor Shaft	Stainless Steel
	Strainer	Stainless Steel
Max. Liquid Temperature		104°F (40°C)
Max. Submersion Depth		66ft (20m)
pH Range		pH 5 - pH 8