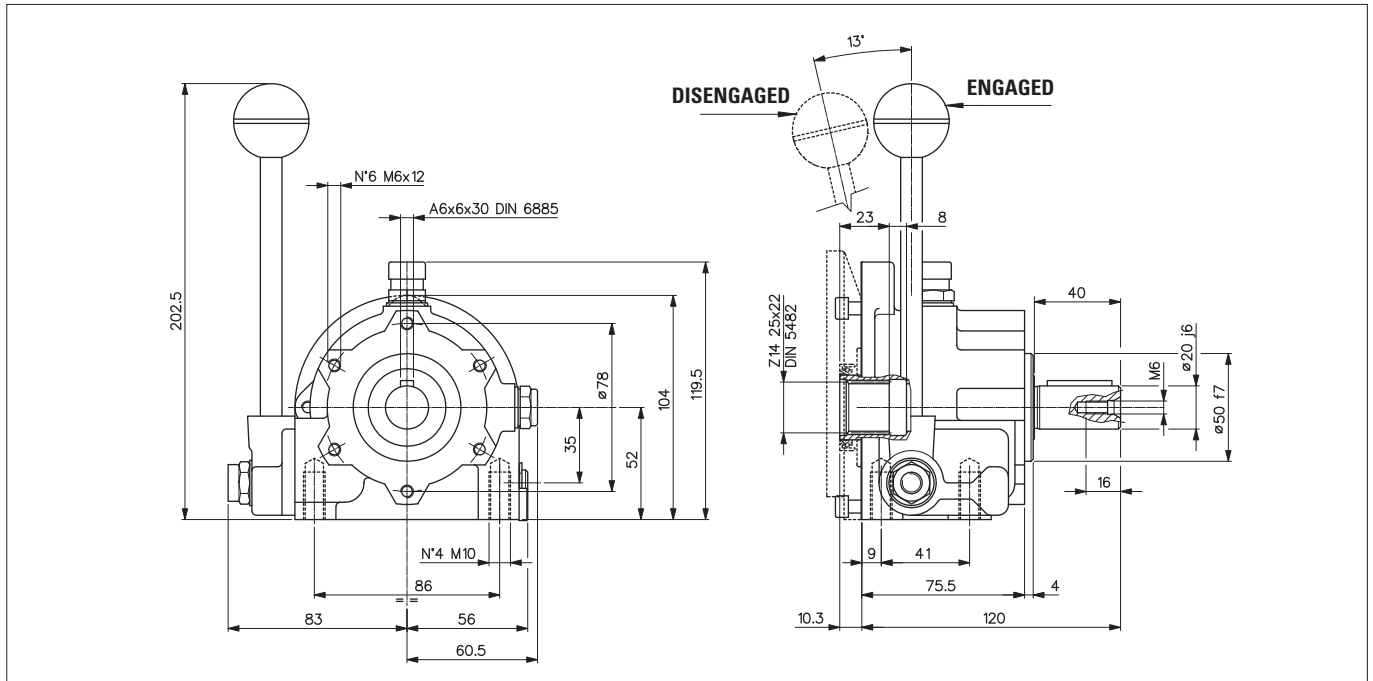


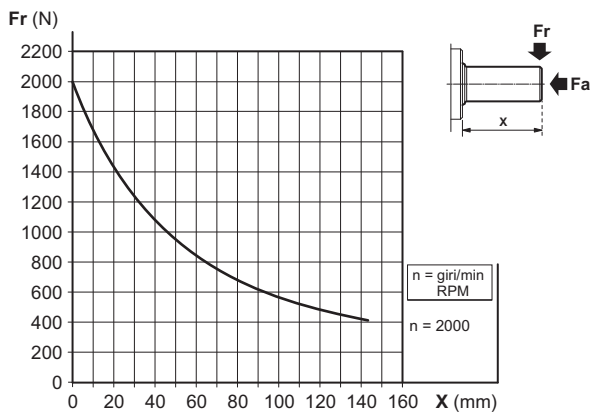
## MECHANICAL CLUTCH, CYLINDRICAL SHAFT FLANGE FOR PUMP GR.1-2

2



### MAXIMUM LOAD ON THE SHAFT

The mechanical clutches IM05 are fitted between motor (electrical or engine) and hydraulic pump or motor, the pump or motor is engaged using a manual lever. Require flanges and coupling to connect pump and motor.



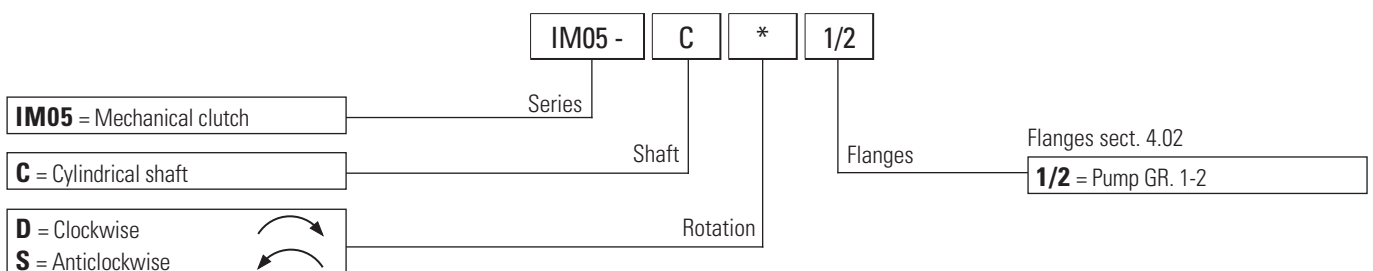
### FEATURES

Radial load (**)	See graphic
Max. axial load (**)	Fa = 120 daN
RPM max	2000 RPM
Max engagement speed (*)	420 RPM
Max. torque	9 daNm
Life (**)	3500 hours
Working temperature	-20 °C ÷ +80 °C
Oil quantity	0.2 lt.
Type of oil	CLP 150-ISO VG150
Oil replacement	12 months

(\*) The engagement and disengagement must be done when the pump is unloaded max speed 420 RPM.

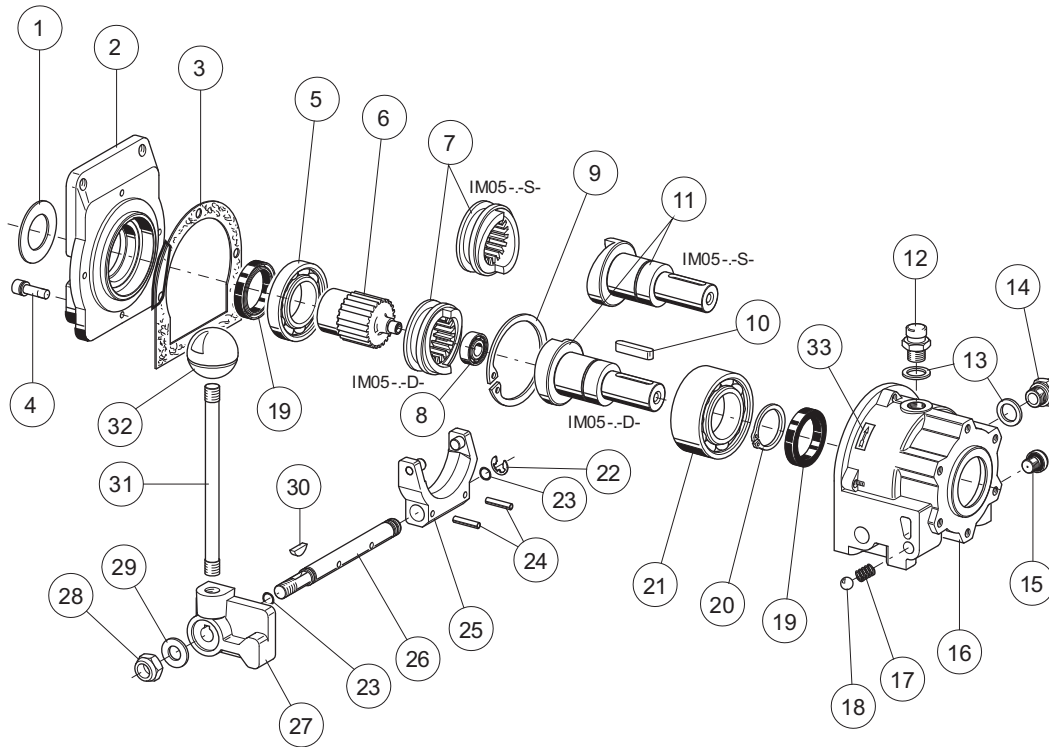
(\*\*)Nominal values calculated according to ISO 281. For more information, contact our technical department.

### ORDERING CODE



## SPARE PARTS

2



Ref.	Code	Q.ty		Description
		IM05-C-D-:	IM05-C-S-:	
1	39100800	1	1	Flange 44/1
2	39022800	1	1	Flange gr.1-2 (sect.4.02)
3	39203000	1	1	Gasket
4	40007300	4	4	Screw TCEI M6x20
5	44005600	1	1	Bearing 16006 30x55x9
6	34202800	1	1	Inlet shaft
7	31202800	1	—	Sleeve - right
	31202900	—	1	Sleeve - left
8	44005500	1	1	Bearing 608 8x22x7
9	Q27160062	1	1	Snap ring I62
10	Q27470211	1	1	Key A6x6x30
11	34202700	1	—	Outlet shaft - right
	34203100	—	1	Outlet shaft - left
12	49100100	1	1	Plug G.1/4
13	49000100	2	2	Nylon washer 13x19x1.5
14	49100200	1	1	Level plug G.1/4
15	49145100	1	1	Plug with O-Ring G.1/8
16	39003800	1	1	Standard body

Ref.	Code	Q.ty		Description
		IM05-C-D-:	IM05-C-S-:	
17	39100400	1	1	Spring
18	Q28620056	1	1	Ball D.8,5
19	44101800	2	2	Shaft seal 30x40x7
20	Q27150300	1	1	Snap ring E30
21	44005200	1	1	Bearing 3206 30x62x23,8
22	Q27100012	1	1	Ring
23	Q25830015	2	2	O-Ring 8.74x1.78
24	Q27420186	2	2	Needle 4x20
25	29000011	1	1	Yoke
26	34300700	1	1	Pin
27	39103200	1	1	Plate
28	Q26560330	1	1	Nut M10x10
29	Q26769015	1	1	Washer 10,5x21x2
30	Q27500072	1	1	Key 4x6.5
31	34300100	1	1	Lever
32	49100400	1	1	Knob D.35
33	LAB00014	1	1	Label