



Needle roller bearings

RNA 4900 2RS M V C3

1

2

3

4

5

1. Basic design:

BK	Closed end drawn cup
HK	Drawn cup needle roller with open ends
NA	Bearing with flanges and inner ring
NK	Bearing with flanges without inner ring
NKI	Bearing with flanges and inner rings
NKIS	Bearing with flanges and inner rings
NKS	Bearing with flanges without inner ring
RNA	Bearing without inner ring

2. Seals, shields and snap rings:

RS	Seal of plate and synthetic rubber on one side
2RS	Seal of plate and synthetic rubber on both sides

3. Cage designs:

TN	Nylon cage, rolling element guided
M	Machined brass cage, rolling element guided
IS1	One lubrication hole in the inner ring

4. Features:

V	Full complement bearing without cage
H...	Reduced tolerance for the inside diameter of the roller and cage assembly; the figures following the letter H indicate the tolerance limits in mm
W64	Solid Oil lubricants

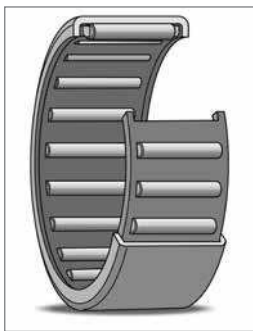
5. Clearance and tolerance:

(C0)*	Normal radial internal clearance
C3	Radial internal clearance > normal
C4	Radial internal clearance > C3
CNR	Reduced normal radial clearance corresponding to earlier standard (ISO 5753-1981)
P5	Dimensional and running accuracy to ISO tolerance class 5 specifications (better than P6)
P6	Dimensional and running accuracy to ISO tolerance class 6 specifications (better than normal)

* Not marked on bearing or package

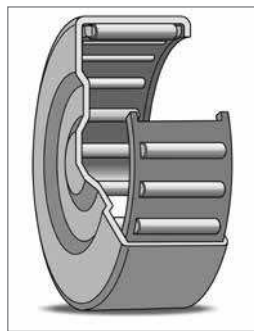
Technical features

Boundary dimensions	In accordance with ISO 3245-1974 (ABMA std 18.1)
Tolerances	Normal
Heat stabilization	302° F (150° C)
Misalignment	None to very minor (contact SKF for further details)
Cage Material	
Standard	Steel
Optional	Polyamide (TN)
Axial load – max	None
Seals	2RS1 – 2 synthetic rubber (NBR) seals only available on RNA 49 and NA 49 series



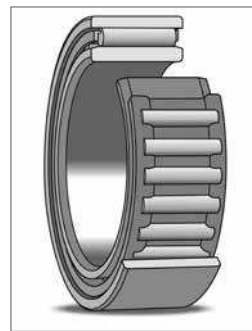
HK

Drawn cup needle roller bearing with open ends (data tables on page 206)



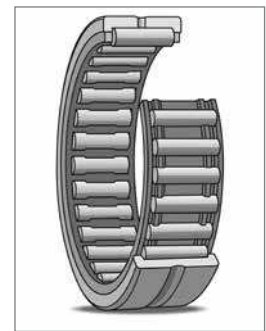
BK

Drawn cup needle roller bearing with closed ends (data tables on page 206)



NA

Needle roller bearing with inner ring (data tables on page 210)



NK

Needle roller bearing without inner ring (data tables on page 214)

Introduction

Needle roller bearings are roller bearings with cylindrical rollers, which are thin and long in relation to their diameter. They are referred to as needle rollers. In spite of their low cross section, the bearings have a high load carrying capacity and are thus eminently suitable for bearing arrangements where radial space is limited.

The needle rollers have a profile, which is slightly relieved towards the roller ends. The resultant modified line contact between needle rollers and raceways means that damaging edge stresses are minimized.

SKF supplies many different types of needle roller bearings, including drawn cup needle roller bearings with open ends and with closed ends, and needle roller bearings with and without inner rings.

Basic design

Needle roller bearings with carbon chromium steel rings have a low sectional height and very high load carrying capacity. Depending on the application, they may be used with or without an inner ring.

Needle roller bearings without inner ring are the better alternative where it is possible to harden and grind the necessary raceways on the shaft. As the inner ring is not needed the shaft can have a larger diameter and will therefore be stiffer. The amount by which the shaft can be axially displaced relative to the housing is also only limited by the width of the raceway on the shaft. By machining the shaft raceways to appropriate accuracies of dimension and form, it is possible to achieve bearing arrangements having enhanced running accuracy.

Needle roller bearings with inner ring are used for arrangements where it is impossible, or uneconomical, to harden and grind the shaft. Bearings with inner ring only permit axial displacements of the shaft relative to the housing within the limits quoted in the bearing tables. If greater displacements have to be accommodated, extended inner rings can be used instead of the standard inner rings. For details on these extended rings, please consult SKF Applications Engineering.

Drawn cup needle roller bearings

Drawn cup needle roller bearings are needle roller bearings with thin, deep drawn outer rings. Their principal characteristics are their very low cross section and their high load carrying capacity. They are mainly used where particularly compact and economic bearing arrangements are desired but where the housing bore cannot serve as a raceway for a needle roller and cage assembly. The bearings must be mounted with an interference fit in the housing. If axial location by means of shoulders, snap rings, etc. is dispensed with, the housing bores can be produced simply and economically.

Drawn cup needle roller bearings are available with open ends (**Figure 1a**), or with one closed end (**Figure 1b**) for mounting on shaft ends. The profiled base (end) of the closed drawn cup enables minor axial guiding forces to be accommodated.

Drawn cup needle roller bearings are generally used without an inner ring. For applications where it is not possible to harden and grind the shaft seating, the inner rings listed in the tables can be used.

The outer ring of hardened sheet steel and the needle roller and cage assembly of drawn cup needle roller bearings form a non-separable unit. The free space available for lubricant means that long relubrication intervals can be applied. The bearings are generally of the single row design with the exception of the relatively wide sizes 1522, 1622, 2030, 2538 and 3038, which incorporate two needle roller and cage assemblies and have a lubrication hole in the outer ring.

Product highlights

Suitable for limited radial space

Low sectional height makes needle roller bearings suitable for applications when heavy radial loads and a limited radial space exist. Depending on the application, they may be used with or without an inner ring, with a roller cage assembly running directly on the shaft.

Drawn cup series – the popular choice

The popular drawn cup series have an extremely thin-walled outer ring and are intended to operate directly on the shaft without use of an inner ring.

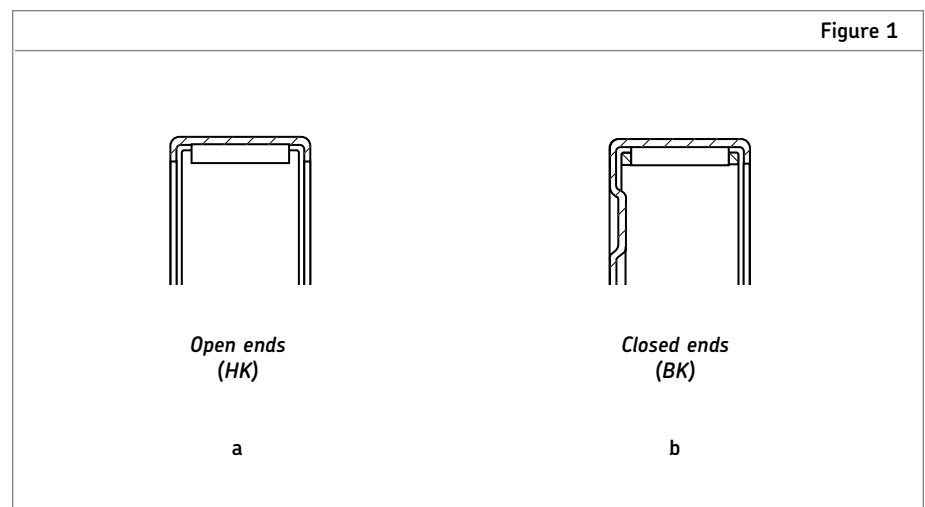
Large product assortment

A wide variety of designs include combined bearings for radial and axial loads allowing for compact and economical bearing arrangements. Size range includes 3 to 360 mm inside diameter.

Seals integration

SKF needle roller bearings are also available with seals on one or two sides making external seals unnecessary. The seals are made of synthetic rubber and provide efficient protection to the bearings against contaminants.

Figure 1



Introduction

Variations

Sealed drawn cup needle roller bearings

For applications where an adequate seal is not available or cannot be provided for space reasons, sealed drawn cup needle roller bearings with open and closed ends (c,d,e) can be supplied. These incorporate rubbing seals of synthetic rubber and are filled with a lithium base grease having good rust inhibiting properties. The bearings are suitable for operating temperatures in the range -4° to $+212^{\circ}$ F (-20° to $+100^{\circ}$ C). For further information on sealed drawn cup needle roller bearings, please consult SKF Applications Engineering.

Needle roller bearings with machined rings

The basic design of SKF needle roller bearings in the size range up to and including 19 mm outside diameter has an outer ring with either integral or inserted flanges (**Figure 2a**). The larger bearings have integral flanges and an annular groove and lubrication hole in the outer ring (**Figure 2b**).

Needle roller bearings with flanged outer rings are mainly produced as single row bearings. The exceptions are bearings of series RNA 69 and NA 69 having outside diameters of 55 mm and above where two needle roller and cage assemblies are guided between integral flanges on the outer ring (**Figure 2c**). The outer ring, needle rollers and cage of all bearings form a non-separable unit.

Sealed bearings

Single row needle roller bearings of series RNA 49 and NA 49 are also available with rubbing seals at one side, RS design (**Figure 2d**), or at both sides, 2RS design (**Figure 2e**). The seals are made of synthetic rubber and provide efficient protection to the bearings against contaminants. All bearings are supplied as standard filled with a lithium base grease having good rust inhibiting properties. The bearings are suitable for operating temperatures in the range of -4° to $+212^{\circ}$ F (-20° to $+100^{\circ}$ C). The inner rings of the sealed bearings are 1 mm wider than the outer rings. This will allow the seals to provide adequate protection against contaminants even where the shaft is slightly displaced axially relative to the housing.

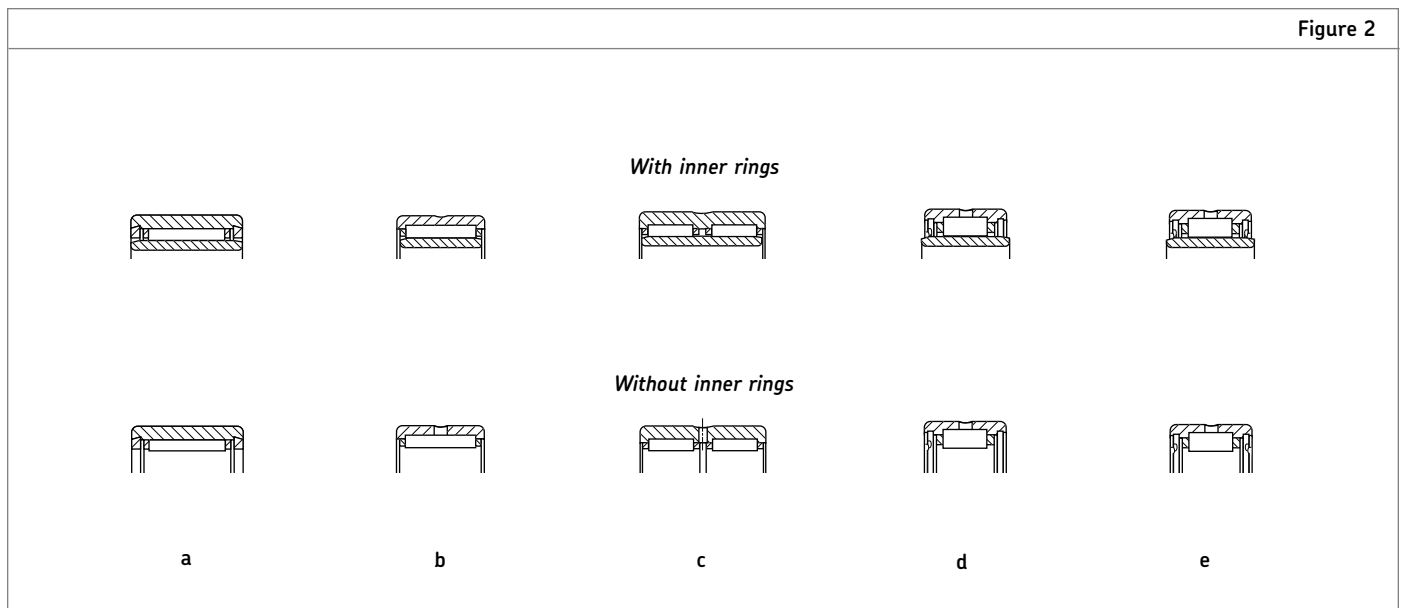
The inner rings also have a lubrication hole so that, depending on the arrangement, it is possible to relubricate the bearings via the outer or inner rings.

Special solutions using needle roller bearings

SKF supplies many different types of needle roller bearings in addition to those shown in this catalog, including:

- Needle roller and cage assemblies
- Needle roller bearings without flanges
- Alignment needle roller bearings
- Combined needle roller / ball bearings
- Combined needle roller / thrust ball bearings
- Combined needle roller / cylindrical roller thrust bearings

Details on these special solution products are available in the [Needle roller bearings catalog \(PUB 06003 EN\)](#), which can be supplied upon request.



Internal Clearance

Radial internal clearance

SKF needle roller bearings with inner ring are supplied with Normal radial internal clearance as standard. Bearings with greater or smaller clearance may be available but this should be checked before ordering.

The clearance values correspond to ISO 5753-1 and are shown in **Table 1**.

Loads

Equivalent dynamic bearing load

Needle roller bearings and standard needle roller bearing assemblies can only accommodate radial loads. Therefore

$$P = Fr$$

Minimum Load

In order to provide satisfactory operation of all ball and roller bearings, they must always be subjected to a given minimum load. This is also true of needle roller bearings, particularly if they run at high speeds where the inertia forces of the rollers and cage, and the friction in the lubricant can have a detrimental influence on the rolling conditions in the bearing. It may also cause damaging sliding movements to occur between the rollers and the raceways.

The requisite minimum radial load to be applied in such cases can be found on the SKF website, www.skf.com under Knowledge Centre/Engineering tools and CAD, or by contacting SKF Applications Engineering.

However, the weight of the components supported by the bearing, together with the external forces, often exceeds the requisite minimum load. If this is not the case, an additional radial load must be applied to the bearing, for example, by increasing belt tension or similar means.

Frequency Vibration Data

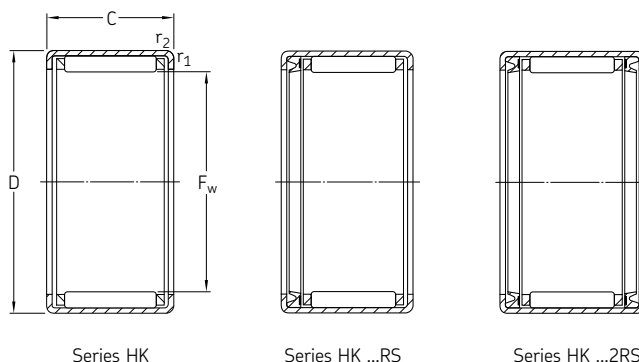
Frequency vibration data is available on the SKF website, www.skf.com under Knowledge Centre/Engineering tools and CAD, or by contacting SKF Applications Engineering.

Table 1

Radial internal clearance of needle roller bearings

Bore diameter d		Radial internal clearance																	
		C2		Normal				C3		C4									
over	incl.	min	max	min	max	min	max	min	max	min	max	min	max	min	max	min	max		
mm	in	µm	in	µm	in	µm	in	µm	in	µm	in	µm	in	µm	in	µm	in		
-	24	0	0.9449	0	25	0.0000	0.0010	20	45	0.0008	0.0018	35	60	0.0014	0.0024	50	75	0.0020	0.0030
24	30	0.9449	1.1811	0	25	0.0000	0.0010	20	45	0.0008	0.0018	35	60	0.0014	0.0024	50	75	0.0020	0.0030
30	40	1.1811	1.5748	5	30	0.0002	0.0012	25	50	0.0010	0.0020	45	70	0.0018	0.0028	60	85	0.0024	0.0033
40	50	1.5748	1.9685	5	35	0.0002	0.0014	30	60	0.0012	0.0024	50	80	0.0020	0.0031	70	100	0.0028	0.0039
50	65	1.9685	2.5591	10	40	0.0004	0.0016	40	70	0.0016	0.0028	60	90	0.0024	0.0035	80	110	0.0031	0.0043
65	80	2.5591	3.1496	10	45	0.0004	0.0018	40	75	0.0016	0.0030	65	100	0.0026	0.0039	90	125	0.0035	0.0049
80	100	3.1496	3.9370	15	50	0.0006	0.0020	50	85	0.0020	0.0033	75	110	0.0030	0.0043	105	140	0.0041	0.0055
100	120	3.9370	4.7244	15	55	0.0006	0.0022	50	90	0.0020	0.0035	85	125	0.0033	0.0049	125	165	0.0049	0.0065
120	140	4.7244	5.5118	15	60	0.0006	0.0024	60	105	0.0024	0.0041	100	145	0.0039	0.0057	145	190	0.0057	0.0075
140	160	5.5118	6.2992	20	70	0.0008	0.0028	70	120	0.0028	0.0047	115	165	0.0045	0.0065	165	215	0.0065	0.0085
160	180	6.2992	7.0866	25	75	0.0010	0.0030	75	125	0.0030	0.0049	120	170	0.0047	0.0067	170	220	0.0067	0.0087
180	200	7.0866	7.8740	35	90	0.0014	0.0035	90	145	0.0035	0.0057	140	195	0.0055	0.0077	195	250	0.0077	0.0098
200	225	7.8740	8.8583	45	105	0.0018	0.0041	105	165	0.0041	0.0065	160	220	0.0063	0.0087	220	280	0.0087	0.0110
225	250	8.8583	9.8425	45	110	0.0018	0.0043	110	175	0.0043	0.0069	170	235	0.0067	0.0093	235	300	0.0093	0.0118
250	280	9.8425	11.0236	55	125	0.0022	0.0049	125	195	0.0049	0.0077	190	260	0.0075	0.0102	260	330	0.0102	0.0130
280	315	11.0236	12.4016	55	130	0.0022	0.0051	130	205	0.0051	0.0081	200	275	0.0079	0.0108	275	350	0.0108	0.0138
315	355	12.4016	13.9764	65	145	0.0026	0.0057	145	225	0.0057	0.0089	225	305	0.0089	0.0120	305	385	0.0120	0.0152
355	400	13.9764	15.7480	100	190	0.0039	0.0075	190	280	0.0075	0.0110	280	370	0.0110	0.0146	370	460	0.0146	0.0181

Single row
 Drawn cup and open end
 Series: HK 0306 TN – HK 1614 RS
 Size: 3 mm – 16 mm
 0.1181 in – 0.6299 in

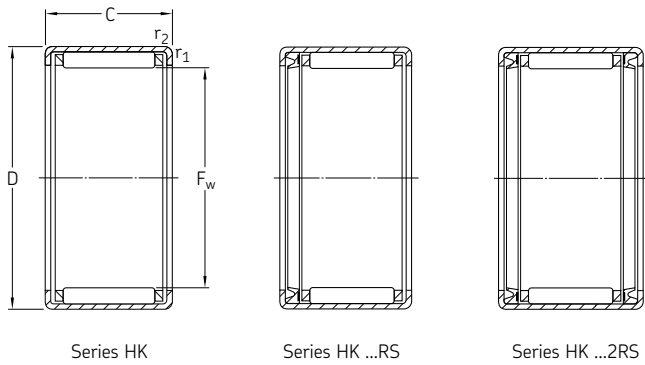


Designation	Principal dimensions						Basic load ratings				Speed rating		Mass			
	Bore F _w		Outside diameter D		Width B		Dynamic C		Static C ₀		Refer- ence speed	Limiting speed	Open end (HK)		Closed end (BK)	
	mm	in	mm	in	mm	in	N	lbf	N	lbf			r/min	r/min	g	oz
HK 0306 TN	3	0.1181	6.5	0.2559	6	0.2362	1 230	280	880	200	24 000	26 000	1.0	0.04	1.0	0.04
HK 0408	4	0.1575	8	0.3150	8	0.3150	1 760	400	1 370	310	22 000	26 000	2.0	0.07	2.1	0.07
HK 0509	5	0.1969	9	0.3543	9	0.3543	2 380	530	2 080	470	22 000	24 000	2.0	0.07	2.1	0.07
HK 0606	6	0.2362	10	0.3937	6	0.2362	1 720	390	1 290	290	20 000	22 000	1.5	0.05	-	-
HK 0608	6	0.2362	10	0.3937	8	0.3150	2 010	450	1 730	390	20 000	22 000	2.1	0.07	-	-
HK 0609	6	0.2362	10	0.3937	9	0.3543	2 810	630	2 700	610	20 000	22 000	2.5	0.09	2.6	0.09
HK 0709	7	0.2756	11	0.4331	9	0.3543	3 030	680	3 050	690	20 000	22 000	2.6	0.09	2.9	0.10
HK 0808	8	0.3150	12	0.4724	8	0.3150	2 700	610	2 750	620	19 000	22 000	2.7	0.10	3.0	0.11
HK 0810	8	0.3150	12	0.4724	10	0.3937	3 690	830	4 050	910	19 000	22 000	3.0	0.11	3.4	0.12
HK 0812 2RS	8	0.3150	12	0.4724	12	0.4724	2 700	610	2 750	620	-	13 000	3.3	0.12	-	-
HK 0908	9	0.3543	13	0.5118	8	0.3150	3 520	790	3 900	880	18 000	20 000	3.0	0.11	-	-
HK 0910	9	0.3543	13	0.5118	10	0.3937	4 130	930	4 800	1 080	18 000	20 000	4.0	0.14	4.3	0.15
HK 0912	9	0.3543	13	0.5118	12	0.4724	5 120	1 150	6 400	1 440	18 000	20 000	4.6	0.16	4.9	0.17
HK 1010	10	0.3937	14	0.5512	10	0.3937	4 290	960	5 300	1 190	18 000	20 000	4.1	0.14	4.3	0.15
HK 1012	10	0.3937	14	0.5512	12	0.4724	5 390	1 210	6 950	1 560	18 000	20 000	4.8	0.17	5.0	0.18
HK 1014 2RS	10	0.3937	14	0.5512	14	0.5512	4 290	960	5 300	1 190	-	12 000	4.6	0.16	-	-
HK 1015	10	0.3937	14	0.5512	15	0.5906	6 600	1 480	9 000	2 020	18 000	20 000	6.0	0.21	6.2	0.22
HK 1210	12	0.4724	16	0.6299	10	0.3937	4 840	1 090	6 400	1 440	16 000	18 000	4.6	0.16	5.2	0.18
HK 1212	12	0.4724	18	0.7087	12	0.4724	6 270	1 410	7 350	1 650	16 000	18 000	9.5	0.34	10.0	0.35
HK 1214 2RS	12	0.4724	16	0.6299	14	0.5512	4 840	1 090	6 400	1 440	-	10 000	8.0	0.28	-	-
HK 1216 2RS	12	0.4724	18	0.7087	16	0.6299	6 270	1 410	7 350	1 650	-	10 000	11.0	0.39	-	-
HK 1312	13	0.5118	19	0.7480	12	0.4724	6 600	1 480	8 000	1 800	16 000	17 000	10.3	0.36	11.0	0.39
HK 1412	14	0.5512	20	0.7874	12	0.4724	6 820	1 530	8 650	1 940	15 000	17 000	10.5	0.37	12.0	0.42
HK 1414 RS	14	0.5512	20	0.7874	14	0.5512	6 820	1 530	8 650	1 940	-	9 500	12.0	0.42	13.0	0.46
HK 1416 2RS	14	0.5512	20	0.7874	16	0.6299	6 820	1 530	8 650	1 940	-	9 500	13.0	0.46	-	-
HK 1512	15	0.5906	21	0.8268	12	0.4724	7 650	1 720	9 500	2 130	15 000	16 000	11.0	0.39	13.0	0.46
HK 1514 RS	15	0.5906	21	0.8268	14	0.5512	7 480	1 680	10 000	2 250	-	9 500	12.0	0.42	14.0	0.49
HK 1516	15	0.5906	21	0.8268	16	0.6299	10 100	2 270	14 600	3 280	15 000	16 000	15.0	0.53	17.0	0.60
HK 1518 RS	15	0.5906	21	0.8268	18	0.7087	10 100	2 270	14 600	3 280	-	9 500	16.0	0.56	-	-
HK 1520 2RS	15	0.5906	21	0.8268	20	0.7874	10 100	2 270	14 600	3 280	-	9 500	18.0	0.63	-	-
HK 1522 ¹⁾	15	0.5906	21	0.8268	22	0.8661	13 000	2 920	20 000	4 490	15 000	16 000	20.0	0.71	-	-
HK 1612	16	0.6299	22	0.8661	12	0.4724	7 370	1 660	9 800	2 200	14 000	16 000	12.0	0.42	14.0	0.49
HK 1614 RS	16	0.6299	22	0.8661	14	0.5512	7 370	1 660	9 800	2 200	-	9 000	13.0	0.46	15.0	0.53

1) Double row

Consult SKF USA Inc. prior to design change or order placement.

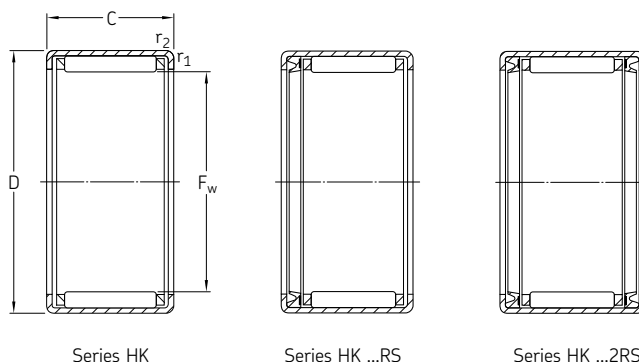
Single row
 Drawn cup and open end
 Series: HK 1616 – HK 3018 RS
 Size: 16 mm – 30 mm
 0.6299 in – 1.1811 in



Designation	Principal dimensions						Basic load ratings				Speed rating		Mass			
	Bore F _w		Outside diameter D		Width B		Dynamic C		Static C ₀		Refer- ence speed	Limiting speed	Open end (HK)		Closed end (BK)	
	mm	in	mm	in	mm	in	N	lbf	N	lbf			r/min	r/min	g	oz
HK 1616	16	0.6299	22	0.8661	16	0.6299	10 500	2 360	15 600	3 510	14 000	16 000	16.0	0.56	18.0	0.63
HK 1620 2RS	16	0.6299	22	0.8661	20	0.7874	10 500	2 360	15 600	3 510	-	9 000	18.0	0.63	-	-
HK 1622 ¹⁾	16	0.6299	22	0.8661	22	0.8661	12 800	2 880	19 600	4 400	14 000	16 000	24.0	0.85	24.0	0.85
HK 1712	17	0.6693	23	0.9055	12	0.4724	7 650	1 720	10 600	2 380	14 000	15 000	13.0	0.46	-	-
HK 1812	18	0.7087	24	0.9449	12	0.4724	7 920	1 780	11 200	2 520	13 000	15 000	13.0	0.46	15.0	0.53
HK 1814 RS	18	0.7087	24	0.9449	14	0.5512	7 920	1 780	11 200	2 520	-	8 500	14.0	0.49	-	-
HK 1816	18	0.7087	24	0.9449	16	0.6299	11 200	2 520	17 600	3 960	13 000	15 000	18.0	0.63	20.0	0.71
HK 2010	20	0.7874	26	1.0236	10	0.3937	6 160	1 380	8 500	1 910	12 000	14 000	12.0	0.42	-	-
HK 2012	20	0.7874	26	1.0236	12	0.4724	8 420	1 890	12 500	2 810	12 000	14 000	14.0	0.49	-	-
HK 2016	20	0.7874	26	1.0236	16	0.6299	12 300	2 760	20 400	4 580	12 000	14 000	19.0	0.67	22.0	0.78
HK 2018 RS	20	0.7874	26	1.0236	18	0.7087	12 300	2 760	20 400	4 580	-	8 000	21.0	0.74	24.0	0.85
HK 2020	20	0.7874	26	1.0236	20	0.7874	15 100	3 390	26 500	5 960	12 000	14 000	24.0	0.85	27.0	0.95
HK 2030 ¹⁾	20	0.7874	26	1.0236	30	1.1811	20 900	4 700	40 500	9 100	12 000	14 000	35.0	1.23	-	-
HK 2210	22	0.8661	28	1.1024	10	0.3937	7 210	1 620	10 600	2 380	11 000	12 000	13.0	0.46	-	-
HK 2212	22	0.8661	28	1.1024	12	0.4724	8 800	1 980	13 700	3 080	11 000	12 000	15.0	0.53	18.0	0.63
HK 2214 RS	22	0.8661	28	1.1024	14	0.5512	8 800	1 980	13 700	3 080	-	7 500	16.0	0.56	-	-
HK 2216	22	0.8661	28	1.1024	16	0.6299	13 000	2 920	22 400	5 030	11 000	12 000	21.0	0.74	24.0	0.85
HK 2218 RS	22	0.8661	28	1.1024	18	0.7087	13 000	2 920	22 400	5 030	-	7 500	24.0	0.85	-	-
HK 2220	22	0.8661	28	1.1024	20	0.7874	15 700	3 530	29 000	6 520	11 000	12 000	26.0	0.92	-	-
HK 2512	25	0.9843	32	1.2598	12	0.4724	10 500	2 360	15 300	3 440	9 500	11 000	20.0	0.71	-	-
HK 2516	25	0.9843	32	1.2598	16	0.6299	15 100	3 390	24 000	5 390	9 500	11 000	25.3	0.89	32.0	1.13
HK 2518 RS	25	0.9843	32	1.2598	18	0.7087	15 100	3 390	24 000	5 390	-	6 700	29.0	1.02	34.0	1.20
HK 2520	25	0.9843	32	1.2598	20	0.7874	19 000	4 270	32 500	7 300	9 500	11 000	33.0	1.16	38.0	1.34
HK 2524 2RS	25	0.9843	32	1.2598	24	0.9449	19 000	4 270	32 500	7 300	-	6 700	40.0	1.41	-	-
HK 2526	25	0.9843	32	1.2598	26	1.0236	24 200	5 440	45 000	10 110	9 500	11 000	44.0	1.55	48.0	1.69
HK 2530 2RS	25	0.9843	32	1.2598	30	1.1811	24 200	5 440	45 000	10 110	-	6 700	47.0	1.66	-	-
HK 2538 ¹⁾	25	0.9843	32	1.2598	38	1.4961	33 000	7 420	65 500	14 720	9 500	11 000	64.0	2.26	68.0	2.40
HK 2816	28	1.1024	35	1.3780	16	0.6299	15 700	3 530	26 500	5 960	9 000	9 500	26.6	0.94	-	-
HK 2818 RS	28	1.1024	35	1.3780	18	0.7087	15 700	3 530	26 500	5 960	-	6 300	31.0	1.09	-	-
HK 2820	28	1.1024	35	1.3780	20	0.7874	20 100	4 520	36 500	8 200	9 000	9 500	36.0	1.27	-	-
HK 3012	30	1.1811	37	1.4567	12	0.4724	11 700	2 630	18 300	4 110	8 000	9 000	23.0	0.81	28.0	0.99
HK 3016	30	1.1811	37	1.4567	16	0.6299	16 500	3 710	29 000	6 520	8 000	9 000	31.0	1.09	38.0	1.34
HK 3018 RS	30	1.1811	37	1.4567	18	0.7087	16 500	3 710	29 000	6 520	-	5 600	37.0	1.31	-	-

1) Double row

Single row
 Drawn cup and open end
 Series: HK 3020 – HK 4020
 Size: 30 mm – 40 mm
 1.1811 in – 1.5748 in

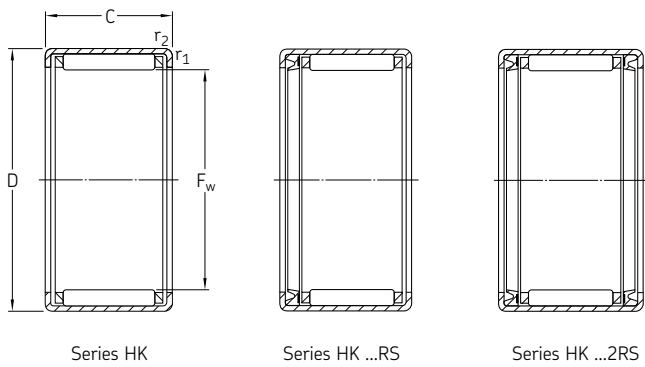


Designation	Principal dimensions						Basic load ratings				Speed rating		Mass			
	Bore F _w		Outside diameter D		Width B		Dynamic C		Static C ₀		Refer- ence speed	Limiting speed	Open end (HK)		Closed end (BK)	
	mm	in	mm	in	mm	in	N	lbf	N	lbf			r/min	r/min	g	oz
HK 3020	30	1.1811	37	1.4567	20	0.7874	20 900	4 700	40 000	8 990	8 000	9 000	38.0	1.34	47.0	1.66
HK 3022	30	1.1811	37	1.4567	22	0.8661	23 800	5 350	46 500	10 450	8 000	9 000	42.0	1.48		
HK 3024 2RS	30	1.1811	37	1.4567	24	0.9449	20 900	4 700	40 000	8 990	–	5 600	44.0	1.55		
HK 3026	30	1.1811	37	1.4567	26	1.0236	27 000	6 070	54 000	12 130	8 000	9 000	51.0	1.80	58.0	2.05
HK 3038 ¹⁾	30	1.1811	37	1.4567	38	1.4961	35 800	8 040	80 000	17 980	8 000	9 000	76.0	2.68	84.0	2.96
HK 3220	32	1.2598	39	1.5354	20	0.7874	22 000	4 940	43 000	9 660	7 500	8 500	40.6	1.43		
HK 3224	32	1.2598	39	1.5354	24	0.9449	26 400	5 930	54 000	12 130	7 500	8 500	49.0	1.73		
HK 3512	35	1.3780	42	1.6535	12	0.4724	12 500	2 810	21 600	4 850	7 000	8 000	27.0	0.95		
HK 3516	35	1.3780	42	1.6535	16	0.6299	17 900	4 020	34 000	7 640	7 000	8 000	36.0	1.27		
HK 3518 RS	35	1.3780	42	1.6535	18	0.7087	17 900	4 020	34 000	7 640	–	5 000	39.0	1.38		
HK 3520	35	1.3780	42	1.6535	20	0.7874	22 900	5 150	46 500	10 450	7 000	8 000	44.0	1.55	53.0	1.87
HK 4012	40	1.5748	47	1.8504	12	0.4724	13 400	3 010	24 500	5 510	6 300	7 000	30.0	1.06		
HK 4016	40	1.5748	47	1.8504	16	0.6299	19 000	4 270	39 000	8 760	6 300	7 000	39.0	1.38		
HK 4018 RS	40	1.5748	47	1.8504	18	0.7087	19 000	4 270	39 000	8 760	–	4 500	45.0	1.59		
HK 4020	40	1.5748	47	1.8504	20	0.7874	24 200	5 440	53 000	11 910	6 300	7 000	54.0	1.90	62.0	2.19

1) Double row

Consult SKF USA Inc. prior to design change or order placement.

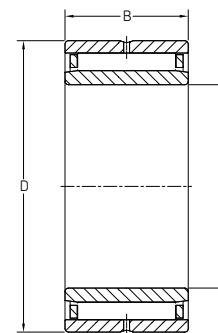
Single row
 Drawn cup and open end
 Series: HK 4512 – HK 6032
 Size: 45 mm – 60 mm
 1.7717 in – 2.3622 in



Designation	Principal dimensions						Basic load ratings				Speed rating		Mass			
	Bore F _w		Outside diameter D		Width B		Dynamic C		Static C ₀		Refer- ence speed	Limiting speed	Open end (HK)		Closed end (BK)	
	mm	in	mm	in	mm	in	N	lbf	N	lbf	r/min	r/min	g	oz	g	oz
HK 4512	45	1.7717	52	2.0472	12	0.4724	14 200	3 190	27 500	6 180	5 600	6 300	33.0	1.16		
HK 4516	45	1.7717	52	2.0472	16	0.6299	20 500	4 610	43 000	9 660	5 600	6 300	46.9	1.65		
HK 4518 RS	45	1.7717	52	2.0472	18	0.7087	20 500	4 610	43 000	9 660	–	4 000	50.0	1.76		
HK 4520	45	1.7717	52	2.0472	20	0.7874	26 000	5 840	60 000	13 480	5 600	6 300	56.0	1.98	72.0	2.54
HN 4525	45	1.7717	52	2.0472	25	0.9843	44 000	44 000	140 000	31 460	4 500	5 600	85.0	3.00		
HK 5020	50	1.9685	58	2.2835	20	0.7874	29 200	6 560	63 000	14 160	5 000	5 600	70.0	2.47		
HK 5022 RS	50	1.9685	58	2.2835	22	0.8661	29 200	6 560	63 000	14 160	–	3 600	76.0	2.68		
HK 5024 2RS	50	1.9685	58	2.2835	24	0.9449	29 200	6 560	63 000	14 160	–	3 600	81.0	2.86		
HK 5025	50	1.9685	58	2.2835	25	0.9843	36 900	8 290	85 000	19 100	5 000	5 600	85.0	3.00		
HK 5520	55	2.1654	63	2.4803	20	0.7874	30 300	6 810	67 000	15 060	4 500	5 000	74.0	2.61		
HK 5528	55	2.1654	63	2.4803	28	1.1024	41 800	9 390	104 000	23 370	4 500	5 000	105.0	3.70		
HK 6012	60	2.3622	68	2.6772	12	0.4724	17 600	3 960	32 000	7 190	4 300	4 800	49.0	1.73		
HK 6020	60	2.3622	68	2.6772	20	0.7874	31 900	7 170	75 000	16 850	4 300	4 800	81.0	2.86		
HK 6032	60	2.3622	68	2.6772	32	1.2598	51 200	11 510	137 000	30 790	4 300	4 800	136.0	4.80		

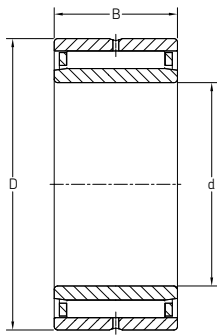
1) Double row

Single row
with inner ring
Series: NA 4822 – NA 4876
Size: 110 mm – 380 mm
4.3307 in – 14.9606 in

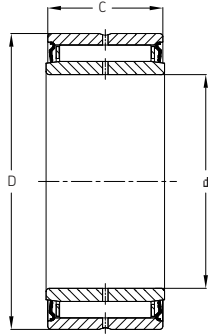


Series NA 48

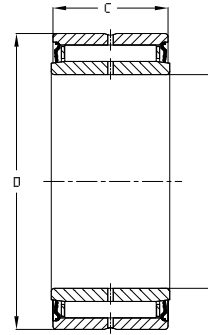
Designation	Principal dimensions						Basic load ratings				Speed rating		Mass	
	Bore d		Outside diameter D		Width B		Dynamic C		Static C ₀		Refer- ence speed	Limiting speed	kg	lb
	mm	in	mm	in	mm	in	N	lbf	N	lbf	r/min	r/min		
NA 4822	110	4.3307	140	5.5118	30	1.1811	93 500	21 010	232 000	52 100	3 400	3 800	1.08	2.38
NA 4824	120	4.7244	150	5.9055	30	1.1811	99 000	22 250	255 000	57 300	3 200	3 600	1.17	2.58
NA 4826	130	5.1181	165	6.4961	35	1.3780	119 000	26 740	325 000	73 000	2 800	3 200	1.81	3.99
NA 4828	140	5.5118	175	6.8898	35	1.3780	121 000	27 190	345 000	77 500	2 600	3 000	1.92	4.23
NA 4830	150	5.9055	190	7.4803	40	1.5748	147 000	33 030	415 000	93 300	2 400	2 800	2.72	6.00
NA 4832	160	6.2992	200	7.8740	40	1.5748	157 000	35 280	450 000	101 100	2 200	2 600	2.87	6.33
NA 4834	170	6.6929	215	8.4646	45	1.7717	179 000	40 220	520 000	116 900	2 200	2 400	3.96	8.73
NA 4836	180	7.0866	225	8.8583	45	1.7717	190 000	42 700	570 000	128 100	2 000	2 400	4.20	9.26
NA 4838	190	7.4803	240	9.4488	50	1.9685	220 000	49 440	710 000	159 600	1 900	2 200	5.55	12.24
NA 4840	200	7.8740	250	9.8425	50	1.9685	224 000	50 300	735 000	165 200	1 800	2 000	5.80	12.79
NA 4844	220	8.6614	270	10.6299	50	1.9685	238 000	53 500	815 000	183 100	1 700	1 900	6.33	13.96
NA 4848	240	9.4488	300	11.8110	60	2.3622	347 000	78 000	1 119 999	251 700	1 500	1 700	9.88	21.79
NA 4852	260	10.2362	320	12.5984	60	2.3622	358 000	80 400	1 199 999	269 700	1 400	1 500	10.60	23.37
NA 4856	280	11.0236	350	13.7795	69	2.7165	429 000	96 400	1 319 999	296 600	1 300	1 400	15.30	33.74
NA 4860	300	11.8110	380	14.9606	80	3.1496	594 000	133 500	1 799 999	404 500	1 100	1 300	21.80	48.07
NA 4864	320	12.5984	400	15.7480	80	3.1496	605 000	136 000	1 899 999	427 000	1 100	1 200	23.00	50.72
NA 4868	340	13.3858	420	16.5354	80	3.1496	616 000	138 400	1 959 999	440 400	1 000	1 200	23.80	52.48
NA 4872	360	14.1732	440	17.3228	80	3.1496	627 000	140 900	2 039 999	458 400	950	1 100	25.60	56.45
NA 4876	380	14.9606	480	18.8976	100	3.9370	968 000	217 500	3 000 000	674 200	900	1 000	42.60	93.93



Series NA 49



Series NA 49 RS



Series NA 2RS

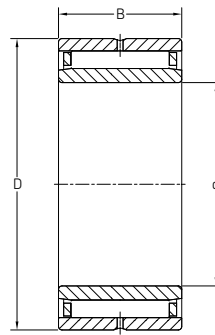
Single row
with inner ring
Open and sealed
Series: NA 4900 – NA 4915
Size: 10 mm – 75 mm
0.3937 in – 2.9528 in

Series: NA 4900 – NA 4907 2RS
Size: 10 mm – 35 mm
0.3937 in – 1.3780 in

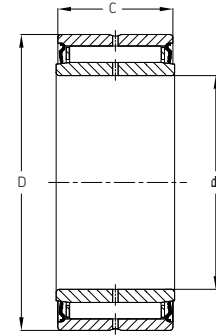
Designation	Principal dimensions						Basic load ratings				Speed rating		Mass	
	Bore d		Outside diameter D		Width B		Dynamic C		Static C ₀		Refer- ence speed	Limiting speed	kg	lb
	mm	in	mm	in	mm	in	N	lbf	N	lbf	r/min	r/min		
NA 49/22	22	0.8661	39	1.5354	17	0.6693	23 300	5 240	32 000	7 190	14 000	15 000	0.0800	0.18
NA 49/28	28	1.1024	45	1.7717	17	0.6693	25 100	5 640	36 500	8 200	12 000	14 000	0.0977	0.22
NA 49/32	32	1.2598	52	2.0472	20	0.7874	30 800	6 920	51 000	11 460	10 000	11 000	0.1580	0.35
NA 4900	10	0.3937	22	0.8661	13	0.5118	8 800	1 980	10 400	2 340	24 000	28 000	0.0237	0.05
NA 4900 RS	10	0.3937	22	0.8661	14	0.5512	7 370	1 660	8 150	1 830	–	12 000	0.0245	0.05
NA 4900 2RS	10	0.3937	22	0.8661	14	0.5512	7 370	1 660	8 150	1 830	–	12 000	0.0245	0.05
NA 4901	12	0.4724	24	0.9449	13	0.5118	9 900	2 220	12 200	2 740	22 000	26 000	0.0260	0.06
NA 4901 2RS	12	0.4724	24	0.9449	14	0.5512	8 090	1 820	9 650	2 170	–	11 000	0.0275	0.06
NA 4902	15	0.5906	28	1.1024	13	0.5118	11 200	2 520	15 300	3 440	19 000	22 000	0.0340	0.07
NA 4902 2RS	15	0.5906	28	1.1024	14	0.5512	9 130	2 050	12 000	2 700	–	9 500	0.0370	0.08
NA 4903	17	0.6693	30	1.1811	13	0.5118	11 400	2 560	16 300	3 660	18 000	20 000	0.0380	0.08
NA 4903 2RS	17	0.6693	30	1.1811	14	0.5512	9 520	2 140	12 900	2 900	–	9 000	0.0400	0.09
NA 4904	20	0.7874	37	1.4567	17	0.6693	21 600	4 850	28 000	6 290	15 000	17 000	0.0752	0.17
NA 4904 2RS	20	0.7874	37	1.4567	18	0.7087	19 400	4 360	22 400	5 030	–	7 500	0.0800	0.18
NA 4905	25	0.9843	42	1.6535	17	0.6693	24 200	5 440	34 500	7 750	13 000	15 000	0.0880	0.19
NA 4905 2RS	25	0.9843	42	1.6535	18	0.7087	21 600	4 850	27 500	6 180	–	6 300	0.0895	0.20
NA 4906	30	1.1811	47	1.8504	17	0.6693	25 500	5 730	39 000	8 760	11 000	13 000	0.1010	0.22
NA 4906 RS	30	1.1811	47	1.8504	18	0.7087	23 300	5 240	32 000	7 190	–	5 600	0.1040	0.23
NA 4906 2RS	30	1.1811	47	1.8504	18	0.7087	23 300	5 240	32 000	7 190	–	5 600	0.1040	0.23
NA 4907	35	1.3780	55	2.1654	20	0.7874	31 900	7 170	54 000	12 130	9 500	11 000	0.1700	0.37
NA 4907 RS	35	1.3780	55	2.1654	21	0.8268	27 000	6 070	43 000	9 660	–	4 800	0.1750	0.39
NA 4907 2RS	35	1.3780	55	2.1654	21	0.8268	27 000	6 070	43 000	9 660	–	4 800	0.1750	0.39

Consult SKF USA Inc. prior to design change or order placement.

Single row
with inner ring
Open and sealed
Series: NA 4908 – NA 4928
Size: 40 mm – 140 mm
1.5748 in – 5.5118 in



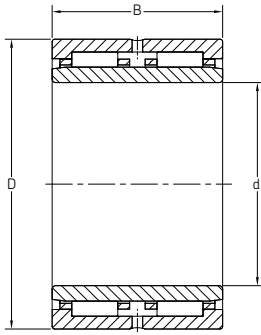
Series NA 49



Series NA 2RS

Designation	Principal dimensions						Basic load ratings				Speed rating		Mass	
	Bore d		Outside diameter D		Width B		Dynamic C		Static C ₀		Refer- ence speed	Limiting speed	kg	lb
	mm	in	mm	in	mm	in	N	lbf	N	lbf	r/min	r/min		
NA 4908	40	1.5748	62	2.4409	22	0.8661	42 900	9 640	71 000	15 960	8 000	9 500	0.230	0.51
NA 4908 2RS	40	1.5748	62	2.4409	23	0.9055	36 900	8 290	58 500	13 150		4 000	0.252	0.56
NA 4909	45	1.7717	68	2.6772	22	0.8661	45 700	10 270	78 000	17 530	7 500	8 500	0.271	0.60
NA 4909 2RS	45	1.7717	68	2.6772	23	0.9055	39 100	8 790	64 000	14 380		3 800	0.290	0.64
NA 4910	50	1.9685	72	2.8346	22	0.8661	47 300	10 630	85 000	19 100	7 000	8 000	0.274	0.60
NA 4910 2RS	50	1.9685	72	2.8346	23	0.9055	40 200	9 030	69 500	15 620		3 400	0.295	0.65
NA 4911	55	2.1654	80	3.1496	25	0.9843	57 200	12 850	106 000	23 820	6 300	7 000	0.393	0.87
NA 4912	60	2.3622	85	3.3465	25	0.9843	60 500	13 600	114 000	25 620	6 000	6 700	0.426	0.94
NA 4913	65	2.5591	90	3.5433	25	0.9843	61 600	13 840	120 000	26 970	5 600	6 300	0.456	1.01
NA 4914	70	2.7559	100	3.9370	30	1.1811	84 200	18 920	163 000	36 630	5 000	5 600	0.728	1.61
NA 4915	75	2.9528	105	4.1339	30	1.1811	84 200	18 920	170 000	38 200	4 800	5 300	0.775	1.71
NA 4916	80	3.1496	110	4.3307	30	1.1811	88 000	19 780	183 000	41 120	4 500	5 000	0.878	1.94
NA 4917	85	3.3465	120	4.7244	35	1.3780	108 000	24 270	250 000	56 200	4 000	4 500	1.250	2.76
NA 4918	90	3.5433	125	4.9213	35	1.3780	112 000	25 170	265 000	59 600	3 800	4 300	1.312	2.89
NA 4919	95	3.7402	130	5.1181	35	1.3780	114 000	25 620	270 000	60 700	3 600	4 000	1.371	3.02
NA 4920	100	3.9370	140	5.5118	40	1.5748	125 000	28 090	280 000	62 900	3 400	4 000	1.900	4.19
NA 4922	110	4.3307	150	5.9055	40	1.5748	130 000	29 210	300 000	67 400	3 200	3 600	2.070	4.56
NA 4924	120	4.7244	165	6.4961	45	1.7717	176 000	39 550	405 000	91 000	3 000	3 400	2.860	6.31
NA 4926	130	5.1181	180	7.0866	50	1.9685	198 000	44 490	480 000	107 900	2 600	3 000	3.900	8.60
NA 4928	140	5.5118	190	7.4803	50	1.9685	205 000	46 070	510 000	114 600	2 400	2 800	4.150	9.15

Consult SKF USA Inc. prior to design change or order placement.



Series NA 69

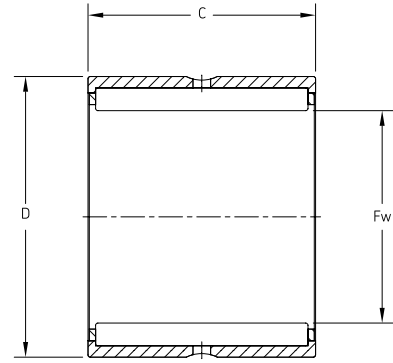
Double row
with inner ring
Series: NA 69/22 – NA 69/32
Size: 22 mm – 32 mm
0.8661 in – 1.2598 in

Series: NA 6901 – NA 6919
Size: 12 mm – 95 mm
0.4724 in – 3.7402 in

Designation	Principal dimensions						Basic load ratings				Speed rating		Mass	
	Bore d		Outside diameter D		Width B		Dynamic C		Static C ₀		Refer- ence speed	Limiting speed	kg	lb
	mm	in	mm	in	mm	in	N	lbf	N	lbf	r/min	r/min		
NA 69/22	22	0.8661	39	1.5354	30	1.1811	36 900	8 290	57 000	12 810	14 000	15 000	0.150	0.33
NA 69/28	28	1.1024	45	1.7717	30	1.1811	39 600	8 900	65 500	14 720	12 000	14 000	0.182	0.40
NA 69/32	32	1.2598	52	2.0472	36	1.4173	47 300	10 630	90 000	20 220	10 000	11 000	0.288	0.64
NA 6901	12	0.4724	24	0.9449	22	0.8661	16 100	3 620	23 200	5 210	22 000	26 000	0.046	0.10
NA 6902	15	0.5906	28	1.1024	23	0.9055	17 200	3 870	27 000	6 070	19 000	22 000	0.064	0.14
NA 6903	17	0.6693	30	1.1811	23	0.9055	18 700	4 200	30 500	6 850	18 000	20 000	0.072	0.16
NA 6904	20	0.7874	37	1.4567	30	1.1811	35 200	7 910	53 000	11 910	15 000	17 000	0.141	0.31
NA 6905	25	0.9843	42	1.6535	30	1.1811	38 000	8 540	62 000	13 930	13 000	15 000	0.161	0.36
NA 6906	30	1.1811	47	1.8504	30	1.1811	42 900	9 640	75 000	16 850	11 000	13 000	0.192	0.42
NA 6907	35	1.3780	55	2.1654	36	1.4173	48 400	10 880	93 000	20 900	9 500	11 000	0.310	0.68
NA 6908	40	1.5748	62	2.4409	40	1.5748	67 100	15 080	125 000	28 090	8 000	9 500	0.430	0.95
NA 6909	45	1.7717	68	2.6772	40	1.5748	70 400	15 820	137 000	30 790	7 500	8 500	0.495	1.09
NA 6910	50	1.9685	72	2.8346	40	1.5748	73 700	16 560	150 000	33 710	7 000	8 000	0.515	1.14
NA 6911	55	2.1654	80	3.1496	45	1.7717	89 700	20 160	190 000	42 700	6 300	7 000	0.780	1.72
NA 6912	60	2.3622	85	3.3465	45	1.7717	93 500	21 010	204 000	45 840	6 000	6 700	0.808	1.78
NA 6913	65	2.5591	90	3.5433	45	1.7717	95 200	21 390	212 000	47 640	5 600	6 300	0.833	1.84
NA 6914	70	2.7559	100	3.9370	54	2.1260	128 000	28 760	285 000	64 000	5 000	5 600	1.340	2.95
NA 6915	75	2.9528	105	4.1339	54	2.1260	130 000	29 210	290 000	65 200	4 800	5 300	1.450	3.20
NA 6916	80	3.1496	110	4.3307	54	2.1260	134 000	30 110	315 000	70 800	4 500	5 000	1.522	3.36
NA 6917	85	3.3465	120	4.7244	63	2.4803	165 000	37 080	425 000	95 500	4 000	4 500	2.200	4.85
NA 6918	90	3.5433	125	4.9213	63	2.4803	172 000	38 650	450 000	101 100	3 800	4 300	2.310	5.09
NA 6919	95	3.7402	130	5.1181	63	2.4803	172 000	38 650	465 000	104 500	3 600	4 000	2.500	5.51

Consult SKF USA Inc. prior to design change or order placement.

Single row
without inner ring
Series: NK 5/10 TN – NK 21/20
Size: 5 mm – 21 mm
0.1969 in – 0.8268 in

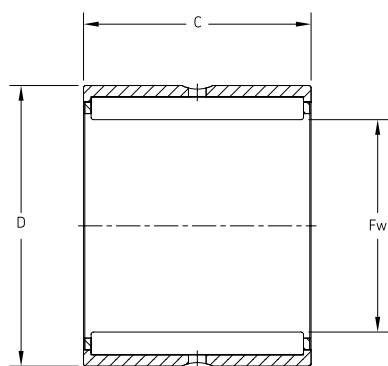


Series NK

Designation	Principal dimensions						Basic load ratings				Speed rating		Mass	
	Bore F _w		Outside diameter D		Width B		Dynamic C		Static C ₀		Refer- ence speed	Limiting speed	kg	lb
	mm	in	mm	in	mm	in	N	lbf	N	lbf	r/min	r/min		
NK 5/10 TN	5	0.1969	10	0.3937	10	0.3937	2 290	510	2 000	450	36 000	40 000	0.00	0.01
NK 5/12 TN	5	0.1969	10	0.3937	12	0.4724	2 920	660	2 700	610	36 000	40 000	0.00	0.01
NK 6/10 TN	6	0.2362	12	0.4724	10	0.3937	2 550	570	2 360	530	34 000	38 000	0.00	0.01
NK 6/12 TN	6	0.2362	12	0.4724	12	0.4724	3 300	740	3 200	720	34 000	38 000	0.01	0.01
NK 7/10 TN	7	0.2756	14	0.5512	10	0.3937	2 810	630	2 750	620	32 000	36 000	0.01	0.02
NK 7/12 TN	7	0.2756	14	0.5512	12	0.4724	3 580	800	3 750	840	32 000	36 000	0.01	0.02
NK 8/12 TN	8	0.3150	15	0.5906	12	0.4724	3 800	850	4 250	960	32 000	36 000	0.01	0.02
NK 8/16 TN	8	0.3150	15	0.5906	16	0.6299	5 010	1 130	5 850	1 310	32 000	36 000	0.01	0.03
NK 9/12 TN	9	0.3543	16	0.6299	12	0.4724	4 400	990	5 200	1 170	30 000	34 000	0.01	0.02
NK 9/16 TN	9	0.3543	16	0.6299	16	0.6299	5 720	1 290	7 200	1 620	30 000	34 000	0.01	0.03
NK 10/12 TN	10	0.3937	17	0.6693	12	0.4724	4 570	1 030	5 700	1 280	28 000	32 000	0.01	0.02
NK 10/16 TN	10	0.3937	17	0.6693	16	0.6299	5 940	1 330	8 000	1 800	28 000	32 000	0.01	0.03
NK 12/16	12	0.4724	19	0.7480	16	0.6299	9 130	2 050	12 000	2 700	26 000	30 000	0.02	0.04
NK 12/12	12	0.4724	19	0.7480	12	0.4724	6 710	1 510	8 150	1 830	26 000	30 000	0.01	0.03
NK 14/16	14	0.5512	22	0.8661	16	0.6299	10 200	2 290	12 500	2 810	24 000	28 000	0.02	0.05
NK 14/20	14	0.5512	22	0.8661	20	0.7874	12 800	2 880	16 600	3 730	24 000	28 000	0.03	0.06
NK 15/16	15	0.5906	23	0.9055	16	0.6299	11 000	2 470	14 000	3 150	24 000	26 000	0.02	0.05
NK 15/20	15	0.5906	23	0.9055	20	0.7874	13 800	3 100	18 300	4 110	24 000	26 000	0.03	0.06
NK 16/16	16	0.6299	24	0.9449	16	0.6299	11 700	2 630	15 300	3 440	22 000	26 000	0.02	0.05
NK 16/20	16	0.6299	24	0.9449	20	0.7874	14 500	3 260	20 000	4 490	22 000	26 000	0.03	0.06
NK 17/16	17	0.6693	25	0.9843	16	0.6299	12 100	2 720	16 600	3 730	22 000	26 000	0.02	0.05
NK 17/20	17	0.6693	25	0.9843	20	0.7874	15 100	3 390	22 000	4 940	22 000	26 000	0.03	0.07
NK 18/20	18	0.7087	26	1.0236	20	0.7874	16 100	3 620	23 600	5 300	22 000	24 000	0.03	0.07
NK 18/16	18	0.7087	26	1.0236	16	0.6299	12 800	2 880	17 600	3 960	22 000	24 000	0.02	0.05
NK 19/16	19	0.7480	27	1.0630	16	0.6299	13 400	3 010	19 000	4 270	20 000	24 000	0.03	0.06
NK 19/20	19	0.7480	27	1.0630	20	0.7874	16 500	3 710	25 500	5 730	20 000	24 000	0.03	0.07
NK 20/16	20	0.7874	28	1.1024	16	0.6299	13 200	2 970	19 300	4 340	19 000	22 000	0.03	0.06
NK 20/20	20	0.7874	28	1.1024	20	0.7874	16 500	3 710	25 500	5 730	19 000	22 000	0.03	0.07
NK 21/16	21	0.8268	29	1.1417	16	0.6299	13 800	3 100	20 400	4 580	19 000	22 000	0.03	0.06
NK 21/20	21	0.8268	29	1.1417	20	0.7874	17 200	3 870	27 000	6 070	19 000	22 000	0.04	0.08

Consult SKF USA Inc. prior to design change or order placement.

Single row
without inner ring
Series: NK 22/16 – NK 45/30 TN
Size: 22 mm – 45 mm
0.8661 in – 1.7717 in

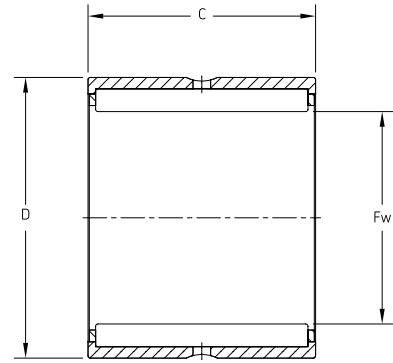


Series NK

Designation	Principal dimensions						Basic load ratings				Speed rating		Mass	
	Bore F _w		Outside diameter D		Width B		Dynamic C		Static C ₀		Refer- ence speed	Limiting speed	kg	lb
	mm	in	mm	in	mm	in	N	lbf	N	lbf	r/min	r/min		
NK 22/16	22	0.8661	30	1.1811	16	0.6299	14 200	3 190	21 600	4 850	18 000	20 000	0.03	0.07
NK 22/20	22	0.8661	30	1.1811	20	0.7874	17 900	4 020	29 000	6 520	18 000	20 000	0.04	0.08
NK 24/16	24	0.9449	32	1.2598	16	0.6299	15 400	3 460	24 500	5 510	16 000	19 000	0.03	0.07
NK 24/20	24	0.9449	32	1.2598	20	0.7874	19 000	4 270	32 500	7 300	16 000	19 000	0.04	0.09
NK 25/16	25	0.9843	33	1.2992	16	0.6299	15 100	3 390	24 500	5 510	16 000	18 000	0.03	0.07
NK 25/20	25	0.9843	33	1.2992	20	0.7874	19 000	4 270	32 500	7 300	16 000	18 000	0.04	0.09
NK 26/16	26	1.0236	34	1.3386	16	0.6299	15 700	3 530	26 000	5 840	15 000	17 000	0.03	0.07
NK 26/20	26	1.0236	34	1.3386	20	0.7874	19 400	4 360	34 500	7 750	15 000	17 000	0.04	0.09
NK 28/20	28	1.1024	37	1.4567	20	0.7874	22 000	4 940	36 500	8 200	14 000	16 000	0.05	0.12
NK 28/30	28	1.1024	37	1.4567	30	1.1811	31 900	7 170	60 000	13 480	14 000	16 000	0.08	0.18
NK 29/30	29	1.1417	38	1.4961	30	1.1811	31 900	7 170	60 000	13 480	14 000	15 000	0.08	0.19
NK 29/20 TN	29	1.1417	38	1.4961	20	0.7874	24 600	5 530	42 500	9 550	14 000	15 000	0.05	0.11
NK 30/20 TN	30	1.1811	40	1.5748	20	0.7874	25 100	5 640	44 000	9 890	13 000	15 000	0.06	0.13
NK 30/30 TN	30	1.1811	40	1.5748	30	1.1811	36 900	8 290	72 000	16 180	13 000	15 000	0.09	0.20
NK 32/30	32	1.2598	42	1.6535	30	1.1811	34 100	7 660	65 500	14 720	12 000	14 000	0.10	0.22
NK 32/20 TN	32	1.2598	42	1.6535	20	0.7874	26 400	5 930	48 000	10 790	12 000	14 000	0.06	0.14
NK 35/20 TN	35	1.3780	45	1.7717	20	0.7874	27 500	6 180	52 000	11 690	11 000	13 000	0.07	0.15
NK 35/30 TN	35	1.3780	45	1.7717	30	1.1811	40 200	9 030	85 000	19 100	11 000	13 000	0.11	0.23
NK 37/20	37	1.4567	47	1.8504	20	0.7874	25 100	5 640	46 500	10 450	11 000	12 000	0.08	0.17
NK 37/30	37	1.4567	47	1.8504	30	1.1811	36 900	8 290	76 500	17 190	11 000	12 000	0.11	0.25
NK 38/20	38	1.4961	48	1.8898	20	0.7874	25 500	5 730	49 000	11 010	11 000	12 000	0.08	0.18
NK 38/30	38	1.4961	48	1.8898	30	1.1811	37 400	8 400	80 000	17 980	11 000	12 000	0.12	0.26
NK 40/30	40	1.5748	50	1.9685	30	1.1811	38 000	8 540	83 000	18 650	10 000	11 000	0.13	0.28
NK 40/20 TN	40	1.5748	50	1.9685	20	0.7874	29 700	6 670	60 000	13 480	10 000	11 000	0.08	0.17
NK 42/20	42	1.6535	52	2.0472	20	0.7874	27 000	6 070	53 000	11 910	9 500	11 000	0.09	0.19
NK 42/30	42	1.6535	52	2.0472	30	1.1811	39 100	8 790	86 500	19 440	9 500	11 000	0.13	0.29
NK 43/20	43	1.6929	53	2.0866	20	0.7874	27 500	6 180	55 000	12 360	9 500	11 000	0.09	0.19
NK 43/30	43	1.6929	53	2.0866	30	1.1811	40 200	9 030	90 000	20 220	9 500	11 000	0.13	0.29
NK 45/20 TN	45	1.7717	55	2.1654	20	0.7874	31 400	7 060	65 500	14 720	9 000	10 000	0.09	0.19
NK 45/30 TN	45	1.7717	55	2.1654	30	1.1811	45 700	10 270	108 000	24 270	9 000	10 000	0.13	0.29

Consult SKF USA Inc. prior to design change or order placement.

Single row
without inner ring
Series: NK 47/20 – NK 110/40
Size: 47 mm – 110 mm
1.8504 in – 4.3307 in

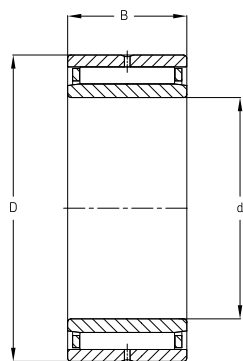


Series NK

Designation	Principal dimensions						Basic load ratings				Speed rating		Mass	
	Bore F _w		Outside diameter D		Width B		Dynamic C		Static C ₀		Refer- ence speed	Limiting speed	kg	lb
	mm	in	mm	in	mm	in	N	lbf	N	lbf	r/min	r/min		
NK 47/20	47	1.8504	57	2.2441	20	0.7874	29 200	6 560	61 000	13 710	8 500	10 000	0.09	0.21
NK 47/30	47	1.8504	57	2.2441	30	1.1811	41 800	9 390	98 000	22 020	8 500	10 000	0.14	0.31
NK 50/25 TN	50	1.9685	62	2.4409	25	0.9843	42 900	9 640	91 500	20 560	8 000	9 000	0.15	0.32
NK 50/35 TN	50	1.9685	62	2.4409	35	1.3780	58 300	13 100	137 000	30 790	8 000	9 000	0.21	0.46
NK 55/35	55	2.1654	68	2.6772	35	1.3780	52 300	11 750	122 000	27 420	7 500	8 500	0.25	0.55
NK 55/25	55	2.1654	68	2.6772	25	0.9843	40 200	9 030	88 000	19 780	7 500	8 500	0.18	0.40
NK 60/35	60	2.3622	72	2.8346	35	1.3780	55 000	12 360	134 000	30 110	6 700	7 500	0.26	0.57
NK 60/25 TN	60	2.3622	72	2.8346	25	0.9843	46 800	10 520	110 000	24 720	6 700	7 500	0.17	0.37
NK 65/25	65	2.5591	78	3.0709	25	0.9843	44 000	9 890	104 000	23 370	6 300	7 000	0.22	0.49
NK 65/35	65	2.5591	78	3.0709	35	1.3780	58 300	13 100	146 000	32 810	6 300	7 000	0.31	0.68
NK 68/25	68	2.6772	82	3.2283	25	0.9843	44 000	9 890	95 000	21 350	6 000	6 700	0.24	0.53
NK 68/35	68	2.6772	82	3.2283	35	1.3780	60 500	13 600	146 000	32 810	6 000	6 700	0.34	0.75
NK 70/25	70	2.7559	85	3.3465	25	0.9843	44 600	10 020	98 000	22 020	6 000	6 700	0.26	0.57
NK 70/35	70	2.7559	85	3.3465	35	1.3780	61 600	13 840	150 000	33 710	6 000	6 700	0.37	0.82
NK 73/25	73	2.8740	90	3.5433	25	0.9843	52 800	11 870	106 000	23 820	5 600	6 300	0.30	0.67
NK 73/35	73	2.8740	90	3.5433	35	1.3780	73 700	16 560	163 000	36 630	5 600	6 300	0.43	0.94
NK 75/25	75	2.9528	92	3.6220	25	0.9843	53 900	12 110	110 000	24 720	5 300	6 000	0.32	0.69
NK 75/35	75	2.9528	92	3.6220	35	1.3780	74 800	16 810	170 000	38 200	5 300	6 000	0.45	0.98
NK 80/25	80	3.1496	95	3.7402	25	0.9843	56 100	12 610	127 000	28 540	5 000	5 600	0.30	0.66
NK 80/35	80	3.1496	95	3.7402	35	1.3780	76 500	17 190	190 000	42 700	5 000	5 600	0.43	0.94
NK 85/25	85	3.3465	105	4.1339	25	0.9843	69 300	15 570	132 000	29 660	4 800	5 300	0.43	0.94
NK 85/35	85	3.3465	105	4.1339	35	1.3780	96 800	21 750	200 000	44 940	4 800	5 300	0.60	1.32
NK 90/25	90	3.5433	110	4.3307	25	0.9843	72 100	16 200	140 000	31 460	4 500	5 000	0.45	0.99
NK 90/35	90	3.5433	110	4.3307	35	1.3780	101 000	22 700	216 000	48 540	4 500	5 000	0.63	1.39
NK 95/26	95	3.7402	115	4.5276	26	1.0236	73 700	16 560	146 000	32 810	4 300	4 800	0.49	1.08
NK 95/36	95	3.7402	115	4.5276	36	1.4173	105 000	23 600	232 000	52 100	4 300	4 800	0.68	1.50
NK 100/26	100	3.9370	120	4.7244	26	1.0236	76 500	17 190	156 000	35 060	4 000	4 500	0.52	1.14
NK 100/36	100	3.9370	120	4.7244	36	1.4173	108 000	24 270	250 000	56 200	4 000	4 500	0.72	1.58
NK 105/26	105	4.1339	125	4.9213	26	1.0236	78 100	17 550	166 000	37 300	3 800	4 300	0.54	1.19
NK 105/36	105	4.1339	125	4.9213	36	1.4173	112 000	25 170	265 000	59 600	3 800	4 300	0.71	1.57
NK 110/30	110	4.3307	130	5.1181	30	1.1811	96 800	21 750	220 000	49 440	3 600	4 000	0.65	1.43
NK 110/40	110	4.3307	130	5.1181	40	1.5748	123 000	27 640	305 000	68 500	3 600	4 000	0.83	1.83

Consult SKF USA Inc. prior to design change or order placement.

Single row
with inner ring
Series: NKI 5/12 TN – NKI 35/30
Size: 5 mm – 35 mm
0.1969 in – 1.3780 in

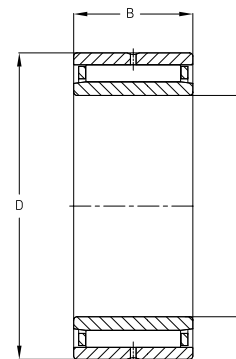


Series NKI

Designation	Principal dimensions						Basic load ratings				Speed rating		Mass	
	Bore d		Outside diameter D		Width B		Dynamic C		Static C ₀		Refer- ence speed	Limiting speed	kg	lb
	mm	in	mm	in	mm	in	N	lbf	N	lbf	r/min	r/min		
NKI 5/12 TN	5	0.1969	15	0.5906	12	0.4724	3 800	850	4 250	960	32 000	36 000	0.011	0.03
NKI 5/16 TN	5	0.1969	15	0.5906	16	0.6299	5 010	1 130	5 850	1 310	32 000	36 000	0.015	0.03
NKI 6/12 TN	6	0.2362	16	0.6299	12	0.4724	4 400	990	5 200	1 170	30 000	34 000	0.013	0.03
NKI 6/16 TN	6	0.2362	16	0.6299	16	0.6299	5 720	1 290	7 200	1 620	30 000	34 000	0.017	0.04
NKI 7/12 TN	7	0.2756	17	0.6693	12	0.4724	4 570	1 030	5 700	1 280	28 000	32 000	0.014	0.03
NKI 7/16 TN	7	0.2756	17	0.6693	16	0.6299	5 940	1 330	8 000	1 800	28 000	32 000	0.018	0.04
NKI 9/12	9	0.3543	19	0.7480	12	0.4724	6 710	1 510	8 150	1 830	26 000	30 000	0.017	0.04
NKI 9/16	9	0.3543	19	0.7480	16	0.6299	9 130	2 050	12 000	2 700	26 000	30 000	0.022	0.05
NKI 10/16	10	0.3937	22	0.8661	16	0.6299	10 200	2 290	12 500	2 810	24 000	28 000	0.029	0.06
NKI 10/20	10	0.3937	22	0.8661	20	0.7874	12 800	2 880	16 600	3 730	24 000	28 000	0.037	0.08
NKI 12/16	12	0.4724	24	0.9449	16	0.6299	11 700	2 630	15 300	3 440	22 000	26 000	0.033	0.07
NKI 12/20	12	0.4724	24	0.9449	20	0.7874	14 500	3 260	20 000	4 490	22 000	26 000	0.042	0.09
NKI 15/16	15	0.5906	27	1.0630	16	0.6299	13 400	3 010	19 000	4 270	20 000	24 000	0.039	0.09
NKI 15/20	15	0.5906	27	1.0630	20	0.7874	16 500	3 710	25 500	5 730	20 000	24 000	0.049	0.11
NKI 17/16	17	0.6693	29	1.1417	16	0.6299	13 800	3 100	20 400	4 580	19 000	22 000	0.042	0.09
NKI 17/20	17	0.6693	29	1.1417	20	0.7874	17 200	3 870	27 000	6 070	19 000	22 000	0.053	0.12
NKI 20/16	20	0.7874	32	1.2598	16	0.6299	15 400	3 460	24 500	5 510	16 000	19 000	0.048	0.11
NKI 20/20	20	0.7874	32	1.2598	20	0.7874	19 000	4 270	32 500	7 300	16 000	19 000	0.060	0.13
NKI 22/16	22	0.8661	34	1.3386	16	0.6299	15 700	3 530	26 000	5 840	15 000	17 000	0.052	0.11
NKI 22/20	22	0.8661	34	1.3386	20	0.7874	19 400	4 360	34 500	7 750	15 000	17 000	0.065	0.14
NKI 25/30	25	0.9843	38	1.4961	30	1.1811	31 900	7 170	60 000	13 480	14 000	15 000	0.115	0.25
NKI 25/20 TN	25	0.9843	38	1.4961	20	0.7874	24 600	5 530	42 500	9 550	14 000	15 000	0.080	0.18
NKI 28/30	28	1.1024	42	1.6535	30	1.1811	34 100	7 660	65 500	14 720	12 000	14 000	0.141	0.31
NKI 28/20 TN	28	1.1024	42	1.6535	20	0.7874	26 400	5 930	48 000	10 790	12 000	14 000	0.092	0.20
NKI 30/20 TN	30	1.1811	45	1.7717	20	0.7874	27 500	6 180	52 000	11 690	11 000	13 000	0.112	0.25
NKI 30/30 TN	30	1.1811	45	1.7717	30	1.1811	40 200	9 030	85 000	19 100	11 000	13 000	0.165	0.36
NKI 32/20	32	1.2598	47	1.8504	20	0.7874	25 100	5 640	46 500	10 450	11 000	12 000	0.114	0.25
NKI 32/30	32	1.2598	47	1.8504	30	1.1811	36 900	8 290	76 500	17 190	11 000	12 000	0.173	0.38
NKI 35/20 TN	35	1.3780	50	1.9685	20	0.7874	29 700	6 670	60 000	13 480	10 000	11 000	0.123	0.27
NKI 35/30	35	1.3780	50	1.9685	30	1.1811	38 000	8 540	83 000	18 650	10 000	11 000	0.193	0.43

Consult SKF USA Inc. prior to design change or order placement.

Single row
with inner ring
Series: NKI 38/20 – NKI 100/40
Size: 38 mm – 100 mm
1.4961 in – 3.9370 in

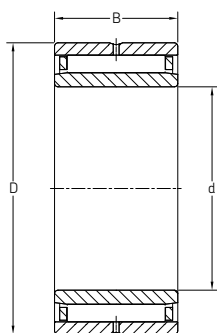


Series NKI

Designation	Principal dimensions						Basic load ratings				Speed rating		Mass	
	Bore d		Outside diameter D		Width B		Dynamic C		Static C ₀		Refer- ence speed	Limiting speed	kg	lb
	mm	in	mm	in	mm	in	N	lbf	N	lbf	r/min	r/min		
NKI 38/20	38	1.4961	53	2.0866	20	0.7874	27 500	6 180	55 000	12 360	9 500	11 000	0.132	0.29
NKI 38/30	38	1.4961	53	2.0866	30	1.1811	40 200	9 030	90 000	20 220	9 500	11 000	0.207	0.46
NKI 40/20 TN	40	1.5748	55	2.1654	20	0.7874	31 400	7 060	65 500	14 720	9 000	10 000	0.138	0.30
NKI 40/30 TN	40	1.5748	55	2.1654	30	1.1811	45 700	10 270	108 000	24 270	9 000	10 000	0.216	0.48
NKI 42/20	42	1.6535	57	2.2441	20	0.7874	29 200	6 560	61 000	13 710	8 500	10 000	0.144	0.32
NKI 42/30	42	1.6535	57	2.2441	30	1.1811	41 800	9 390	98 000	22 020	8 500	10 000	0.218	0.48
NKI 45/25 TN	45	1.7717	62	2.4409	25	0.9843	42 900	9 640	91 500	20 560	8 000	9 000	0.220	0.49
NKI 45/35 TN	45	1.7717	62	2.4409	35	1.3780	58 300	13 100	137 000	30 790	8 000	9 000	0.305	0.67
NKI 50/25	50	1.9685	68	2.6772	25	0.9843	40 200	9 030	88 000	19 780	7 500	8 500	0.262	0.58
NKI 50/35	50	1.9685	68	2.6772	35	1.3780	52 300	11 750	122 000	27 420	7 500	8 500	0.364	0.80
NKI 55/35	55	2.1654	72	2.8346	35	1.3780	55 000	12 360	134 000	30 110	6 700	7 500	0.364	0.80
NKI 55/25 TN	55	2.1654	72	2.8346	25	0.9843	46 800	10 520	110 000	24 720	6 700	7 500	0.262	0.58
NKI 60/25	60	2.3622	82	3.2283	25	0.9843	44 000	9 890	95 000	21 350	6 000	6 700	0.394	0.87
NKI 60/35	60	2.3622	82	3.2283	35	1.3780	60 500	13 600	146 000	32 810	6 000	6 700	0.553	1.22
NKI 65/25	65	2.5591	90	3.5433	25	0.9843	52 800	11 870	106 000	23 820	5 600	6 300	0.463	1.02
NKI 65/35	65	2.5591	90	3.5433	35	1.3780	73 700	16 560	163 000	36 630	5 600	6 300	0.659	1.45
NKI 70/25	70	2.7559	95	3.7402	25	0.9843	56 100	12 610	127 000	28 540	5 000	5 600	0.511	1.13
NKI 70/35	70	2.7559	95	3.7402	35	1.3780	76 500	17 190	190 000	42 700	5 000	5 600	0.718	1.58
NKI 75/25	75	2.9528	105	4.1339	25	0.9843	69 300	15 570	132 000	29 660	4 800	5 300	0.641	1.41
NKI 75/35	75	2.9528	105	4.1339	35	1.3780	96 800	21 750	200 000	44 940	4 800	5 300	0.908	2.00
NKI 80/25	80	3.1496	110	4.3307	25	0.9843	72 100	16 200	140 000	31 460	4 500	5 000	0.679	1.50
NKI 80/35	80	3.1496	110	4.3307	35	1.3780	101 000	22 700	216 000	48 540	4 500	5 000	0.956	2.11
NKI 85/26	85	3.3465	115	4.5276	26	1.0236	73 700	16 560	146 000	32 810	4 300	4 800	0.738	1.63
NKI 85/36	85	3.3465	115	4.5276	36	1.4173	105 000	23 600	232 000	52 100	4 300	4 800	1.040	2.29
NKI 90/26	90	3.5433	120	4.7244	26	1.0236	76 500	17 190	156 000	35 060	4 000	4 500	0.777	1.71
NKI 90/36	90	3.5433	120	4.7244	36	1.4173	108 000	24 270	250 000	56 200	4 000	4 500	1.090	2.40
NKI 95/26	95	3.7402	125	4.9213	26	1.0236	78 100	17 550	166 000	37 300	3 800	4 300	0.816	1.80
NKI 95/36	95	3.7402	125	4.9213	36	1.4173	112 000	25 170	265 000	59 600	3 800	4 300	1.145	2.52
NKI 100/30	100	3.9370	130	5.1181	30	1.1811	96 800	21 750	220 000	49 440	3 600	4 000	0.991	2.19
NKI 100/40	100	3.9370	130	5.1181	40	1.5748	123 000	27 640	305 000	68 500	3 600	4 000	1.330	2.93

Consult SKF USA Inc. prior to design change or order placement.

Single row
with inner ring
Series: NKIS 15 – NKIS 65
Size: 15 mm – 65 mm
0.5906 in – 2.5591 in

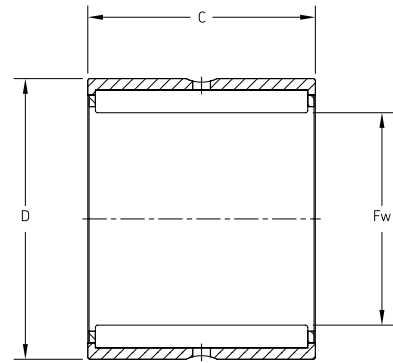


Series NKIS

Designation	Principal dimensions						Basic load ratings				Speed rating		Mass	
	Bore d		Outside diameter D		Width B		Dynamic C		Static C ₀		Refer- ence speed	Limiting speed	kg	lb
	mm	in	mm	in	mm	in	N	lbf	N	lbf	r/min	r/min		
NKIS 15	15	0.5906	35	1.3780	20	0.7874	24 600	5 530	30 000	6 740	16 000	19 000	0.092	0.20
NKIS 17	17	0.6693	37	1.4567	20	0.7874	26 000	5 840	33 500	7 530	15 000	17 000	0.098	0.22
NKIS 20	20	0.7874	42	1.6535	20	0.7874	28 600	6 430	39 000	8 760	13 000	15 000	0.129	0.28
NKIS 25	25	0.9843	47	1.8504	22	0.8661	34 100	7 660	46 500	10 450	12 000	13 000	0.162	0.36
NKIS 30	30	1.1811	52	2.0472	22	0.8661	36 900	8 290	54 000	12 130	10 000	12 000	0.184	0.41
NKIS 35	35	1.3780	58	2.2835	22	0.8661	39 100	8 790	61 000	13 710	9 000	10 000	0.220	0.49
NKIS 40	40	1.5748	65	2.5591	22	0.8661	42 900	9 640	72 000	16 180	8 000	9 000	0.281	0.62
NKIS 45	45	1.7717	72	2.8346	22	0.8661	44 600	10 020	78 000	17 530	7 000	8 000	0.336	0.74
NKIS 50	50	1.9685	80	3.1496	28	1.1024	62 700	14 090	104 000	23 370	6 300	7 500	0.518	1.14
NKIS 55	55	2.1654	85	3.3465	28	1.1024	66 000	14 830	114 000	25 620	6 000	6 700	0.558	1.23
NKIS 60	60	2.3622	90	3.5433	28	1.1024	68 200	15 330	120 000	26 970	5 600	6 300	0.560	1.23
NKIS 65	65	2.5591	95	3.7402	28	1.1024	70 400	15 820	132 000	29 660	5 300	6 000	0.641	1.41

Consult SKF USA Inc. prior to design change or order placement.

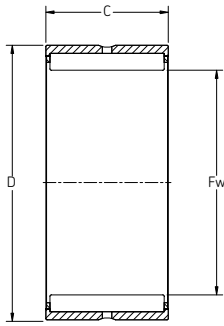
Single row
without inner ring
Series: NKS 20 – NKS 75
Size: 20 mm – 75 mm
0.7874 in – 2.9528 in



Series NKS

Designation	Principal dimensions						Basic load ratings				Speed rating		Mass	
	Bore F _w		Outside diameter D		Width B		Dynamic C		Static C ₀		Refer- ence speed	Limiting speed	kg	lb
	mm	in	mm	in	mm	in	N	lbf	N	lbf	r/min	r/min		
NKS 20	20	0.7874	32	1.2598	20	0.7874	23 300	5 240	27 000	6 070	18 000	20 000	0.05	0.11
NKS 22	22	0.8661	35	1.3780	20	0.7874	24 600	5 530	30 000	6 740	16 000	19 000	0.06	0.14
NKS 24	24	0.9449	37	1.4567	20	0.7874	26 000	5 840	33 500	7 530	15 000	17 000	0.07	0.14
NKS 25	25	0.9843	38	1.4961	20	0.7874	27 500	6 180	36 000	8 090	15 000	17 000	0.07	0.15
NKS 28	28	1.1024	42	1.6535	20	0.7874	28 600	6 430	39 000	8 760	13 000	15 000	0.08	0.18
NKS 30	30	1.1811	45	1.7717	22	0.8661	31 900	7 170	43 000	9 660	12 000	14 000	0.10	0.23
NKS 32	32	1.2598	47	1.8504	22	0.8661	34 100	7 660	46 500	10 450	12 000	13 000	0.11	0.24
NKS 35	35	1.3780	50	1.9685	22	0.8661	35 200	7 910	50 000	11 240	11 000	12 000	0.12	0.26
NKS 37	37	1.4567	52	2.0472	22	0.8661	36 900	8 290	54 000	12 130	10 000	12 000	0.12	0.27
NKS 40	40	1.5748	55	2.1654	22	0.8661	38 000	8 540	57 000	12 810	9 500	11 000	0.13	0.28
NKS 43	43	1.6929	58	2.2835	22	0.8661	39 100	8 790	61 000	13 710	9 000	10 000	0.14	0.31
NKS 45	45	1.7717	60	2.3622	22	0.8661	40 200	9 030	64 000	14 380	8 500	10 000	0.15	0.32
NKS 50	50	1.9685	65	2.5591	22	0.8661	42 900	9 640	72 000	16 180	8 000	9 000	0.16	0.35
NKS 55	55	2.1654	72	2.8346	22	0.8661	44 600	10 020	78 000	17 530	7 000	8 000	0.22	0.49
NKS 60	60	2.3622	80	3.1496	28	1.1024	62 700	14 090	104 000	23 370	6 300	7 500	0.34	0.74
NKS 65	65	2.5591	85	3.3465	28	1.1024	66 000	14 830	114 000	25 620	6 000	6 700	0.36	0.78
NKS 70	70	2.7559	90	3.5433	28	1.1024	68 200	15 330	120 000	26 970	5 600	6 300	0.38	0.84
NKS 75	75	2.9528	95	3.7402	28	1.1024	70 400	15 820	132 000	29 660	5 300	6 000	0.40	0.89

Single row
without inner ring
Series: RNA 4822 – RNA 4876
Size: 120 mm – 415 mm
4.7244 in – 16.3386 in



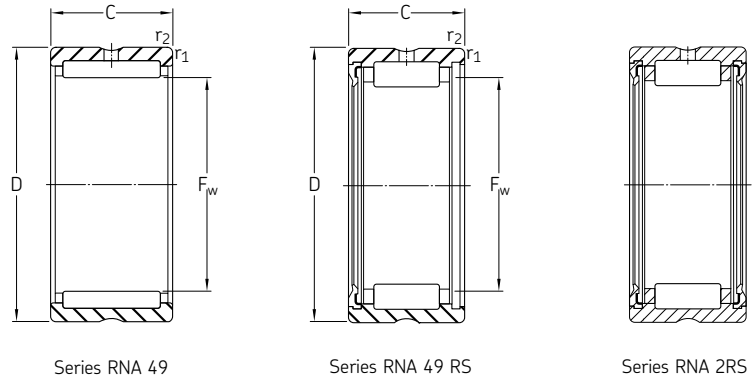
Series RNA 48

Designation	Principal dimensions						Basic load ratings				Speed rating		Mass	
	Bore F _w		Outside diameter D		Width B		Dynamic C		Static C ₀		Refer- ence speed	Limiting speed	kg	lb
	mm	in	mm	in	mm	in	N	lbf	N	lbf	r/min	r/min		
RNA 4822	120	4.7244	140	5.5118	30	1.1811	93 500	21 010	232 000	52 100	3 400	3 800	0.66	1.46
RNA 4824	130	5.1181	150	5.9055	30	1.1811	99 000	22 250	255 000	57 300	3 200	3 600	0.73	1.61
RNA 4826	145	5.7087	165	6.4961	35	1.3780	119 000	26 740	325 000	73 000	2 800	3 200	0.99	2.18
RNA 4828	155	6.1024	175	6.8898	35	1.3780	121 000	27 190	345 000	77 500	2 600	3 000	0.97	2.14
RNA 4830	165	6.4961	190	7.4803	40	1.5748	147 000	33 030	415 000	93 300	2 400	2 800	1.60	3.53
RNA 4832	175	6.8898	200	7.8740	40	1.5748	157 000	35 280	450 000	101 100	2 200	2 600	1.70	3.75
RNA 4834	185	7.2835	215	8.4646	45	1.7717	179 000	40 220	520 000	116 900	2 200	2 400	2.54	5.60
RNA 4836	195	7.6772	225	8.8583	45	1.7717	190 000	42 700	570 000	128 100	2 000	2 400	2.68	5.91
RNA 4838	210	8.2677	240	9.4488	50	1.9685	220 000	49 440	710 000	159 600	1 900	2 200	3.21	7.08
RNA 4840	220	8.6614	250	9.8425	50	1.9685	224 000	50 300	735 000	165 200	1 800	2 000	3.35	7.39
RNA 4844	240	9.4488	270	10.6299	50	1.9685	238 000	53 500	815 000	183 100	1 700	1 900	3.62	7.98
RNA 4848	265	10.4331	300	11.8110	60	2.3622	347 000	78 000	1 119 999	251 700	1 500	1 700	5.40	11.91
RNA 4852	285	11.2205	320	12.5984	60	2.3622	358 000	80 400	1 199 999	269 700	1 400	1 500	5.80	12.79
RNA 4856	305	12.0079	350	13.7795	69	2.7165	429 000	96 400	1 319 999	296 600	1 300	1 400	9.30	20.51
RNA 4860	330	12.9921	380	14.9606	80	3.1496	594 000	133 500	1 799 999	404 500	1 100	1 300	12.70	28.00
RNA 4864	350	13.7795	400	15.7480	80	3.1496	605 000	136 000	1 899 999	427 000	1 100	1 200	13.40	29.55
RNA 4868	370	14.5669	420	16.5354	80	3.1496	616 000	138 400	1 959 999	440 400	1 000	1 200	14.00	30.87
RNA 4872	390	15.3543	440	17.3228	80	3.1496	627 000	140 900	2 039 999	458 400	950	1 100	14.80	32.63
RNA 4876	415	16.3386	480	18.8976	100	3.9370	968 000	217 500	3 000 000	674 200	900	1 000	26.00	57.33

Consult SKF USA Inc. prior to design change or order placement.

Single row
without inner ring
Open and sealed
Series: RNA 49/22 – RNA 49/32
Size: 14 mm – 85 mm
1.1024 in – 1.5748 in

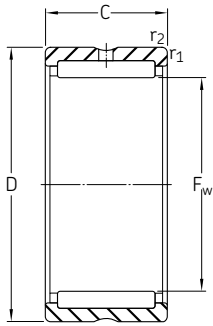
Series: RNA 4900 – RNA 4907 2RS
Size: 14 mm – 42 mm
0.5512 in – 1.6535 in



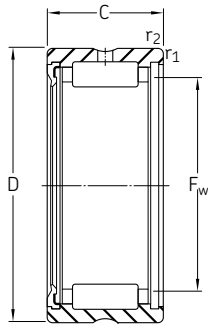
Designation	Principal dimensions						Basic load ratings				Speed rating		Mass	
	Bore F _w		Outside diameter D		Width B		Dynamic C		Static C ₀		Refer- ence speed	Limiting speed	kg	lb
	mm	in	mm	in	mm	in	N	lbf	N	lbf	r/min	r/min		
RNA 49/22	28	1.1024	39	1.5354	17	0.6693	23 300	5 240	32 000	7 190	14 000	15 000	0.05	0.11
RNA 49/28	32	1.2598	45	1.7717	17	0.6693	25 100	5 640	36 500	8 200	12 000	14 000	0.07	0.16
RNA 49/32	40	1.5748	52	2.0472	20	0.7874	30 800	6 920	51 000	11 460	10 000	11 000	0.09	0.20
RNA 4900	14	0.5512	22	0.8661	13	0.5118	8 800	1 980	10 400	2 340	24 000	28 000	0.02	0.04
RNA 4900 2RS	14	0.5512	22	0.8661	13	0.5118	7 370	1 660	8 150	1 830	–	12 000	0.02	0.04
RNA 4901	16	0.6299	24	0.9449	13	0.5118	9 900	2 220	12 200	2 740	22 000	26 000	0.02	0.04
RNA 4901 2RS	16	0.6299	24	0.9449	13	0.5118	8 090	1 820	9 650	2 170	–	11 000	0.02	0.04
RNA 4902	20	0.7874	28	1.1024	13	0.5118	11 200	2 520	15 300	3 440	19 000	22 000	0.02	0.05
RNA 4902 2RS	20	0.7874	28	1.1024	13	0.5118	9 130	2 050	12 000	2 700	–	9 500	0.02	0.05
RNA 4903	22	0.8661	30	1.1811	13	0.5118	11 400	2 560	16 300	3 660	18 000	20 000	0.02	0.05
RNA 4903 RS	22	0.8661	30	1.1811	13	0.5118	9 520	2 140	12 900	2 900	–	9 000	0.02	0.05
RNA 4903 2RS	22	0.8661	30	1.1811	13	0.5118	9 520	2 140	12 900	2 900	–	9 000	0.02	0.05
RNA 4904	25	0.9843	37	1.4567	17	0.6693	21 600	4 850	28 000	6 290	15 000	17 000	0.05	0.12
RNA 4904 RS	25	0.9843	37	1.4567	17	0.6693	19 400	4 360	22 400	5 030	–	7 500	0.06	0.12
RNA 4904 2RS	25	0.9843	37	1.4567	17	0.6693	19 400	4 360	22 400	5 030	–	7 500	0.06	0.12
RNA 4905	30	1.1811	42	1.6535	17	0.6693	24 200	5 440	34 500	7 750	13 000	15 000	0.06	0.13
RNA 4905 RS	30	1.1811	42	1.6535	17	0.6693	21 600	4 850	27 500	6 180	–	6 300	0.06	0.13
RNA 4905 2RS	30	1.1811	42	1.6535	17	0.6693	21 600	4 850	27 500	6 180	–	6 300	0.06	0.13
RNA 4906	35	1.3780	47	1.8504	17	0.6693	25 500	5 730	39 000	8 760	11 000	13 000	0.07	0.15
RNA 4906 RS	35	1.3780	47	1.8504	17	0.6693	23 300	5 240	32 000	7 190	–	5 600	0.07	0.15
RNA 4906 2RS	35	1.3780	47	1.8504	17	0.6693	23 300	5 240	32 000	7 190	–	5 600	0.07	0.15
RNA 4907	42	1.6535	55	2.1654	20	0.7874	31 900	7 170	54 000	12 130	9 500	11 000	0.11	0.24
RNA 4907 RS	42	1.6535	55	2.1654	20	0.7874	27 000	6 070	43 000	9 660	–	4 800	0.11	0.24
RNA 4907 2RS	42	1.6535	55	2.1654	20	0.7874	27 000	6 070	43 000	9 660	–	4 800	0.11	0.24

Consult SKF USA Inc. prior to design change or order placement.

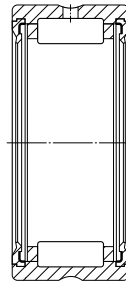
Single row
without inner ring
Open and sealed
Series: RNA 4908 – RNA 4928
Size: 48 mm – 160 mm
1.8898 in – 6.2992 in



Series RNA 49



Series RNA 49 RS



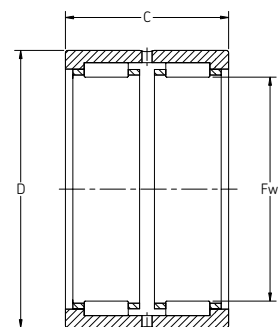
Series RNA 2RS

Designation	Principal dimensions						Basic load ratings				Speed rating		Mass	
	Bore F _w		Outside diameter D		Width B		Dynamic C		Static C ₀		Refer- ence speed	Limiting speed	kg	lb
	mm	in	mm	in	mm	in	N	lbf	N	lbf	r/min	r/min		
RNA 4908	48	1.8898	62	2.4409	22	0.8661	42 900	9 640	71 000	15 960	8 000	9 500	0.14	0.31
RNA 4908 RS	48	1.8898	62	2.4409	22	0.8661	36 900	8 290	58 500	13 150	–	4 000	0.15	0.34
RNA 4908 2RS	48	1.8898	62	2.4409	22	0.8661	36 900	8 290	58 500	13 150	–	4 000	0.15	0.34
RNA 4909	52	2.0472	68	2.6772	22	0.8661	45 700	10 270	78 000	17 530	7 500	8 500	0.18	0.40
RNA 4909 RS	52	2.0472	68	2.6772	22	0.8661	39 100	8 790	64 000	14 380	–	3 800	0.16	0.35
RNA 4909 2RS	52	2.0472	68	2.6772	22	0.8661	39 100	8 790	64 000	14 380	–	3 800	0.16	0.35
RNA 4910	58	2.2835	72	2.8346	22	0.8661	47 300	10 630	85 000	19 100	7 000	8 000	0.16	0.36
RNA 4910 RS	58	2.2835	72	2.8346	22	0.8661	40 200	9 030	69 500	15 620	–	3 400	0.16	0.35
RNA 4910 2RS	58	2.2835	72	2.8346	22	0.8661	40 200	9 030	69 500	15 620	–	3 400	0.16	0.35
RNA 4911	63	2.4803	80	3.1496	25	0.9843	57 200	12 850	106 000	23 820	6 300	7 000	0.26	0.56
RNA 4912	68	2.6772	85	3.3465	25	0.9843	60 500	13 600	114 000	25 620	6 000	6 700	0.28	0.61
RNA 4913	72	2.8346	90	3.5433	25	0.9843	61 600	13 840	120 000	26 970	5 600	6 300	0.31	0.69
RNA 4914	80	3.1496	100	3.9370	30	1.1811	84 200	18 920	163 000	36 630	5 000	5 600	0.46	1.01
RNA 4915	85	3.3465	105	4.1339	30	1.1811	84 200	18 920	170 000	38 200	4 800	5 300	0.49	1.08
RNA 4916	90	3.5433	110	4.3307	30	1.1811	88 000	19 780	183 000	41 120	4 500	5 000	0.52	1.14
RNA 4917	100	3.9370	120	4.7244	35	1.3780	108 000	24 270	250 000	56 200	4 000	4 500	0.66	1.45
RNA 4918	105	4.1339	125	4.9213	35	1.3780	112 000	25 170	265 000	59 600	3 800	4 300	0.75	1.64
RNA 4919	110	4.3307	130	5.1181	35	1.3780	114 000	25 620	270 000	60 700	3 600	4 000	0.72	1.59
RNA 4920	115	4.5276	140	5.5118	40	1.5748	125 000	28 090	280 000	62 900	3 400	4 000	1.15	2.54
RNA 4922	125	4.9213	150	5.9055	40	1.5748	130 000	29 210	300 000	67 400	3 200	3 600	1.24	2.73
RNA 4924	135	5.3150	165	6.4961	45	1.7717	176 000	39 550	405 000	91 000	3 000	3 400	1.86	4.10
RNA 4926	150	5.9055	180	7.0866	50	1.9685	198 000	44 490	480 000	107 900	2 600	3 000	2.21	4.87
RNA 4928	160	6.2992	190	7.4803	50	1.9685	205 000	46 070	510 000	114 600	2 400	2 800	2.35	5.18

Consult SKF USA Inc. prior to design change or order placement.

Double row
without inner ring
Series: RNA 69/22 – RNA 69/32
Size: 28 mm – 40 mm
1.1024 in – 1.5748 in

Series: RNA 6901 – RNA 6919
Size: 16 mm – 110 mm
0.6299 in – 4.3307 in



Series RNA 69

Designation	Principal dimensions						Basic load ratings				Speed rating		Mass	
	Bore F _w		Outside diameter D		Width B		Dynamic C		Static C ₀		Refer- ence speed	Limiting speed	kg	lb
	mm	in	mm	in	mm	in	N	lbf	N	lbf	r/min	r/min		
RNA 69/22	28	1.1024	39	1.5354	30	1.1811	36 900	8 290	57 000	12 810	14 000	15 000	0.10	0.22
RNA 69/28	32	1.2598	45	1.7717	30	1.1811	39 600	8 900	65 500	14 720	12 000	14 000	0.14	0.30
RNA 69/32	40	1.5748	52	2.0472	36	1.4173	47 300	10 630	90 000	20 220	10 000	11 000	0.16	0.36
RNA 6901	16	0.6299	24	0.9449	22	0.8661	16 100	3 620	23 200	5 210	22 000	26 000	0.03	0.07
RNA 6902	20	0.7874	28	1.1024	23	0.9055	17 200	3 870	27 000	6 070	19 000	22 000	0.04	0.09
RNA 6903	22	0.8661	30	1.1811	23	0.9055	18 700	4 200	30 500	6 850	18 000	20 000	0.04	0.09
RNA 6904	25	0.9843	37	1.4567	30	1.1811	35 200	7 910	53 000	11 910	15 000	17 000	0.10	0.22
RNA 6905	30	1.1811	42	1.6535	30	1.1811	38 000	8 540	62 000	13 930	13 000	15 000	0.11	0.25
RNA 6906	35	1.3780	47	1.8504	30	1.1811	42 900	9 640	75 000	16 850	11 000	13 000	0.13	0.28
RNA 6907	42	1.6535	55	2.1654	36	1.4173	48 400	10 880	93 000	20 900	9 500	11 000	0.19	0.43
RNA 6908	48	1.8898	62	2.4409	40	1.5748	67 100	15 080	125 000	28 090	8 000	9 500	0.26	0.56
RNA 6909	52	2.0472	68	2.6772	40	1.5748	70 400	15 820	137 000	30 790	7 500	8 500	0.34	0.75
RNA 6910	58	2.2835	72	2.8346	40	1.5748	73 700	16 560	150 000	33 710	7 000	8 000	0.31	0.68
RNA 6911	63	2.4803	80	3.1496	45	1.7717	89 700	20 160	190 000	42 700	6 300	7 000	0.47	1.04
RNA 6912	68	2.6772	85	3.3465	45	1.7717	93 500	21 010	204 000	45 840	6 000	6 700	0.49	1.08
RNA 6913	72	2.8346	90	3.5433	45	1.7717	95 200	21 390	212 000	47 640	5 600	6 300	0.58	1.28
RNA 6914	80	3.1496	100	3.9370	54	2.1260	128 000	28 760	285 000	64 000	5 000	5 600	0.86	1.89
RNA 6915	85	3.3465	105	4.1339	54	2.1260	130 000	29 210	290 000	65 200	4 800	5 300	0.94	2.06
RNA 6916	90	3.5433	110	4.3307	54	2.1260	134 000	30 110	315 000	70 800	4 500	5 000	0.99	2.18
RNA 6917	100	3.9370	120	4.7244	63	2.4803	165 000	37 080	425 000	95 500	4 000	4 500	1.20	2.65
RNA 6918	105	4.1339	125	4.9213	63	2.4803	172 000	38 650	450 000	101 100	3 800	4 300	1.33	2.93
RNA 6919	110	4.3307	130	5.1181	63	2.4803	172 000	38 650	465 000	104 500	3 600	4 000	1.46	3.22