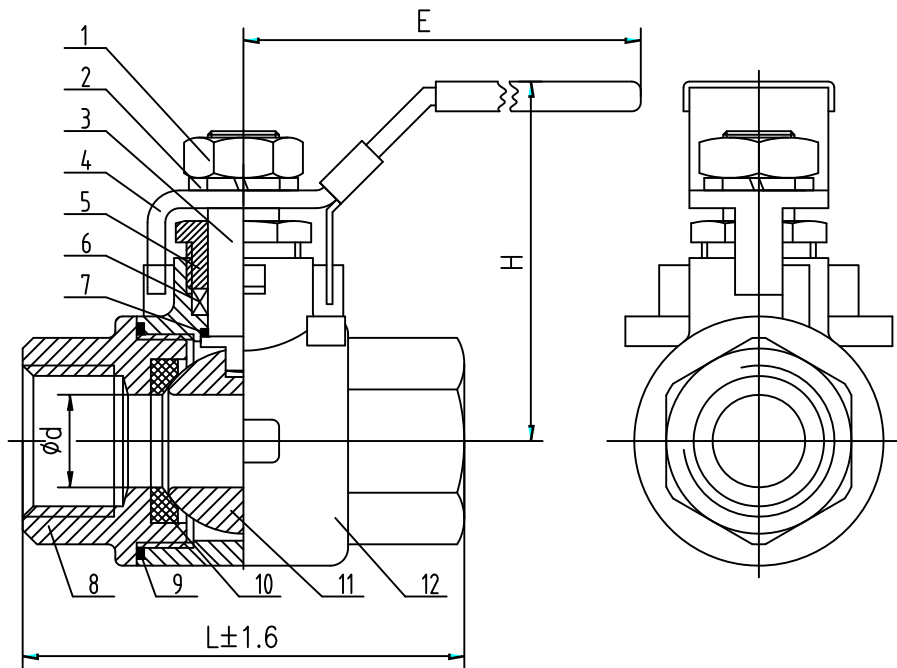


MAIN PARTS AND MATERIALS

NO.	PART NAME	MATERIAL	NO.	PART NAME	MATERIAL
1	Nut	stainless steel	7	Thrust Gasket	PTFE
2	Spring Washer	stainless steel	8	Bonnet	WCB/CF8/CF8M
3	Stem	304/316	9	Gasket	PTFE
4	Handle	stainless steel	10	Seat	R-PTFE
5	Gland Nut	stainless steel	11	Ball	304/316
6	Packing	PTFE	12	Body	WCB/CF8/CF8M

CONFIGURATION DIMENSION

	1/4"	3/8"	1/2"	3/4"	1"	1 1/4"	1 1/2"	2"
d	8	10	15	20	25	32	38	49
H	45	45	55	65	70	80	90	95
E	100	100	110	120	130	150	160	180
L	55	55	64	72	84	94	110	123



Main Technical Parameter			
Nominal pressure		2000PSI	
Test pressure	Shell	20.7	Mpa
	High-Pressure Closure	15.2	
	Low-Pressure Closure	0.4~0.7	
Applicable temperature		-29~180℃	
Applicable medium: water, oil, gas			

Please note: This Drawing for reference only.



DIE ERSTE INDUSTRY CO., LTD.
TAICHUNG, TAIWAN

SHEET 1 OF 1	DRAWN BY: LORENA LIU 09/06/21	REVIEW BY:	APPROVAL:	UNIT: mm	DO NOT SCALE DRAWING	TITLE: New EG-211R Econ. 2000 psi Ball Valve	REV 2.0
REMARK				PROJECT: 	DWG. NO.		

PROPRIETARY AND CONFIDENTIAL

THE INFORMATION CONTAINED IN THIS DRAWING IS THE SOLE PROPERTY OF «DIE ERSTE INDUSTRY CO., LTD.». ANY REPRODUCTION IN PART OR AS A WHOLE WITHOUT THE WRITTEN PERMISSION OF «DIE ERSTE INDUSTRY CO., LTD.» IS PROHIBITED.