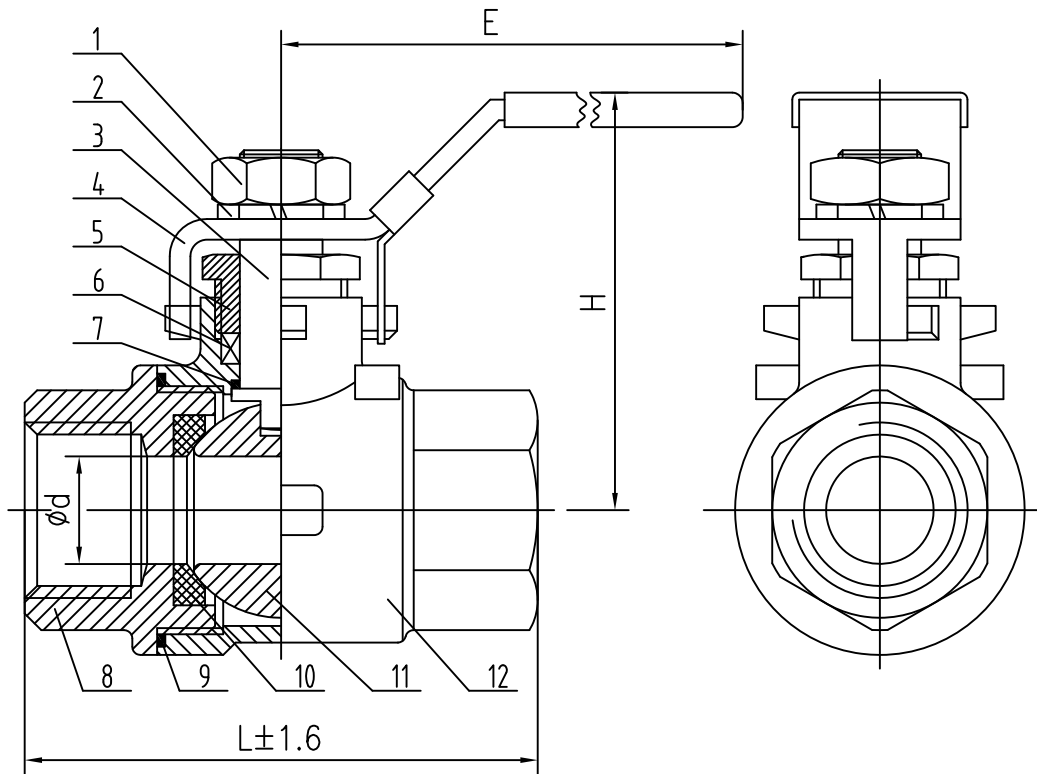


MAIN PARTS AND MATERIALS

NO.	PART NAME	MATERIAL	NO.	PART NAME	MATERIAL
1	Nut	304	7	Thrust Gasket	PTFE
2	Spring Washer	304	8	Bonnet	CF8/CF8M
3	Stem	304/316	9	Gasket	PTFE
4	Handle	304	10	Seat	R-PTFE
5	Gland Nut	304	11	Ball	304/316
6	Packing	PTFE	12	Body	CF8/CF8M

CONFIGURATION DIMENSION

	1/4"	3/8"	1/2"	3/4"	1"	1 1/4"	1 1/2"	2"	2 1/2"	3"	4"
d	8	10	15	20	25	32	38	49	65	80	100
L	50	60	75	80	90	110	120	140	185	205	240
H	55	55	55	60	70	75	90	100	130	140	165
E	90	90	105	115	120	145	175	175	210	230	300



Please note: This Drawing for reference only.

Technical Requirements

1. Design & manufacture conform to DIN3357
2. Test & Inspect conform to DIN3230
3. Face to Face dimension conforms to DIN3202-M3
4. End dimension conforms to DIN259

Main Technical Parameter			
Nominal pressure		PN63	
Test pressure	Shell	9.5	Mpa
	High-Pressure Closure	7.0	
	Low-Pressure Closure	0.4~0.7	
Applicable temperature		-20~150°C	
Applicable medium: water, oil, gas			



DIE ERSTE INDUSTRY CO., LTD.
TAICHUNG, TAIWAN

SHEET 1 OF 1	DRAWN BY: LORENA LIU 05/19/22	REVIEW BY:	APPROVAL:	UNIT: mm	DO NOT SCALE DRAWING	TITLE: 2PC ball valve	REV 2.0
REMARK				PROJECT: 	DWG. NO.		

PROPRIETARY AND CONFIDENTIAL

THE INFORMATION CONTAINED IN THIS DRAWING IS THE SOLE PROPERTY OF «DIE ERSTE INDUSTRY CO., LTD.». ANY REPRODUCTION IN PART OR AS A WHOLE WITHOUT THE WRITTEN PERMISSION OF «DIE ERSTE INDUSTRY CO., LTD.» IS PROHIBITED.