



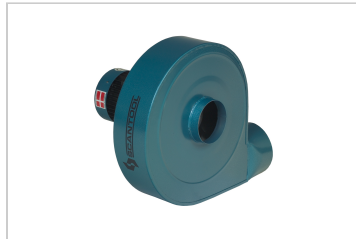
Wall exhaust system

0204300

Wall Exhaust Systems - Ventilator

Complete fan with motor and housing for SCANTOOL RS 2000, RS 3000 and RS 4000 wall exhaust systems for suction of fumes, steam and gasses.

Available in 1x230v and 3x400v



Product specification

Rpm	3000
Voltage	1x230V / 3x400-50 Hz
Motor (kW)	1,1
Number of spindle speeds	1
Length (mm)	570
Width (mm)	540
Height (mm)	380
Net weight (kg)	19,5