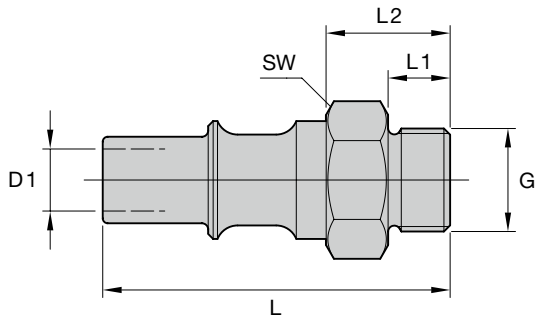


Außen-Gewindetüllen Typ K-GT-A..., zum Einschrauben in Druckluftwerkzeuge und Vorrichtungen
Sockets Type K-GT-A..., with external thread to be screwed in air pressure tools and units

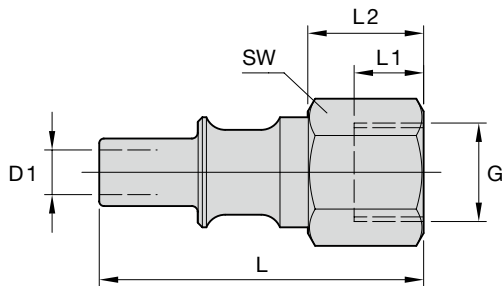


| Bezeichnung Designation | G | Id. Nr. Id. No. | passend in Kupplungen suitable for couplings HSK | Durchgang Passage D1 Ø | SW | L | L1 | L2 |
|----------------------------|-------|--------------------|--|------------------------------|----|------|----|----|
| K-GT0-A | G1/4" | 6706837 | 0 | 4,0 | 17 | 47,5 | 8 | 16 |
| | G3/8" | 6706840 | | | | 49,5 | 10 | 18 |
| K-GT1-A | G1/4" | 6706850 | 1 | 7,5 | 22 | 54,0 | 8 | 18 |
| | G3/8" | 6706845 | | | | 56,0 | 10 | 20 |
| | G1/2" | 6706848 | | | | 58,0 | 12 | 22 |
| K-GT2-A | G3/8" | 6706856 | 2 | 10,0 | 24 | 64,0 | 10 | 20 |
| | G1/2" | 6706852 | | | 24 | 66,0 | 12 | 22 |
| | G3/4" | 6706854 | | | 27 | 69,0 | 15 | 25 |
| K-GT3-A | G3/4" | 6706859 | 3 | 15,0 | 32 | 74,5 | 15 | 27 |
| | G1" | 6706862 | | | 36 | 79,5 | 20 | 32 |

Bestellbeispiel Example for ordering
K-GT1-AG 1/2"

Auch in Messing lieferbar
Also available in brass

Innen-Gewindetüllen Typ K-GT-I..., zum Einschrauben in Druckluftwerkzeuge und Vorrichtungen
Sockets Type K-GT-I..., with internal thread to be screwed in air pressure tools and units



| Bezeichnung Designation | G | Id. Nr. Id. No. | passend in Kupplungen suitable for couplings HSK | Durchgang Passage D1 Ø | SW | L | L1 | L2 | | | |
|----------------------------|-------|--------------------|--|------------------------------|----|------|----|------|------|----|------|
| K-GT0-I | G1/4" | 6706871 | 0 | 4,0 | 17 | 51,5 | 12 | 20,0 | | | |
| | G3/8" | 6706873 | | | 22 | | | | | | |
| K-GT1-I | G1/4" | 6706882 | 1 | 7,5 | 22 | 56,0 | 12 | 20,0 | | | |
| | G3/8" | 6706877 | | | 24 | | | | 61,0 | 15 | 25,0 |
| | G1/2" | 6706880 | | | | | | | | | |
| K-GT2-I | G3/8" | 6706889 | 2 | 10,0 | 24 | 66,0 | 12 | 22,0 | | | |
| | G1/2" | 6706885 | | | 32 | | | | 69,0 | 15 | 25,0 |
| | G3/4" | 6706887 | | | | | | | | | |
| K-GT3-I | G3/4" | 6706893 | 3 | 15,0 | 32 | 73,0 | 15 | 25,5 | | | |
| | G1" | 6706896 | | | 41 | | | 77,0 | 29,5 | | |

Bestellbeispiel Example for ordering
K-GT1-IG 1/2"

Auch in Messing lieferbar
Also available in brass