

# K-FC51-NPT1/2

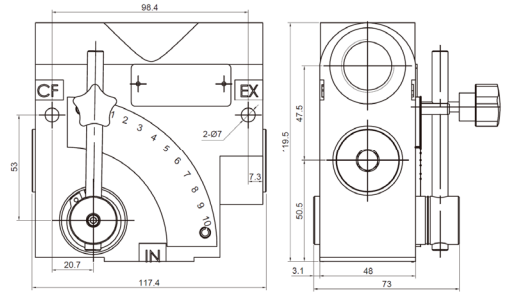
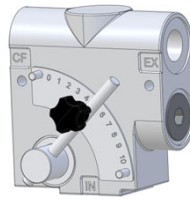
3-Way flow control valve adjustable

**HANSA FLEX**

Last updated: 2/23/23

## Properties

<b>Max working pressure</b>	207 bar
<b>Max flow rate</b>	114 lpm
<b>Design</b>	Pressure compensated
<b>Material</b>	Cast iron
<b>Custom tariff number</b>	84812010



## Product details

<b>Thread IN, CF, EX</b>	1/2-14 NPT
<b>Max flow rate</b>	114 lpm
<b>Max regulated flow rate</b>	0-61 lpm
<b>Material</b>	Cast iron, zinc galvanized finish
<b>Custom tariff number</b>	84812010

## Note

These valves must be set according to the application.

## Description

With these 3-way flow control valves, the input volume flow (IN) is divided into a constant preferred oil flow (CF) and a residual oil flow (EX). The preferred oil flow (CF) is set by the lever, the residual oil flow (EX) can be diverted to the tank or used for an ancillary consumer