

HK V0 590 0500

Shock valve da. IGR1/2" f. EPM+EPRM

HANSA FLEX

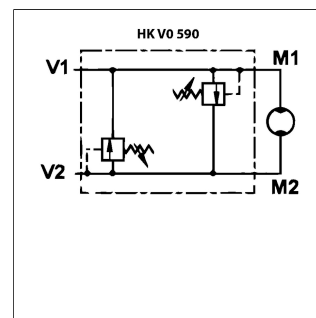
Last updated: 20/08/2024

Properties

Max. working pressure	max. 300 bar
Design	direct flange mounting O-ring gasket
Material	housing: galvanised steel internal parts made of steel
Mounting	screw set HK M8 35 for valve HK V0 590 0500 screw set HK M10 35 for valve HK V0 590 0490, HK V0 590 0505
Use	for hydraulic planetary motors
Customs tariff number	84812010



The product image may differ



Product details

Flow max. (l/min)	60	For motor	HK EPM, HK EPRM, HK HM BMP HD, HK HM BMR HD
Setting range max. (bar)	180	Setting range min. (bar)	40
Connection	G 1/2" female		

Note

These valves must be set according to the application.

Ordering information

Springs for other setting ranges available as accessories

Accessories

HK M	Metric screw set, hexagon socket
HK VML	Spring for shock valve