




VALVOLE A LEVA A 90° IN ACCIAIO INOX

STAINLESS STEEL AISI 316 L 90° LEVER VALVE
 HEBEL VENTILE 90° AUS EDELSTAHL AISI 316 L
 DISTRIBUTEURS À LEVIER EN ACIER INOX AISI 316 L
 VÁLVULAS DE PALANCA EN ACERO INOX AISI 316 L
 VÁLVULA DE ALAVANCA A 90° EM AÇO INOXIDÁVEL AISI 316 L

AISI 316L

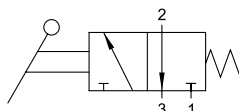
| | | |
|---|---|------------|
| | | 1/4 |
|  | ATTACCO FILETTATO THREADED ANSCHLUSS CONNEXION ROSCA CONEXÃO ROSCADA | 1/4 |
|  | PRESSIONE DI FUNZIONAMENTO OPERATING PRESSURE BETRIEBSDRUCK PRESSION DE SERVICE PRESIÓN DE EJERCICIO PRESSÃO DE OPERAÇÃO | 1 ÷ 10 bar |
|  | FORZA DI ATTIVAZIONE ACTIVATION FORCE BETÄTIGUNGSKRAFT FORCE D'ACTUATION FUERZA DE ACTIVACIÓN FORÇA ACTIVAÇÃO | 20 N |

| | |
|--|-----------|
| Materiali e Componenti | IT |
| 1 Corpo in acciaio INOX 316 L (1.4404) 2 Spola in acciaio INOX 316 L (1.4404) 3 Guarnizioni in PUR e O-Ring FKM | |
| Component Parts and Materials | GB |
| 1 Stainless Steel 316 L (1.4404) body 2 Stainless Steel 316 L (1.4404) spool 3 PUR seals and FKM O-Ring | |
| Komponenten und Materialien | DE |
| 1 Körper Edelstahl AISI 316 L (1.4404) 2 Schieber AISI 316 L (1.4404) 3 PUR Dichtung und FKM O-Ring | |
| Matériaux et Composants | FR |
| 1 Corps en Acier Inoxydable 316 L (1.4404) 2 Tiroir en Acier Inoxydable 316 L (1.4404) 3 Joints en PUR et O-Ring en FKM | |
| Materiales y Componentes | ES |
| 1 Cuerpo en Acero Inoxidable 316 L (1.4404) 2 Corredera en Acero Inoxidable 316 L (1.4404) 3 Juntas en PUR y O-Ring en FKM | |
| Materiais e Componentes | PT |
| 1 Corpo em Aço Inoxidável 316 L (1.4404) 2 Carretel em Aço Inoxidável 316 L (1.4404) 3 Vedações em PUR e O-Ring em FKM | |

3/2 Vie - Ways - Wege - Voies - Vías - Vias

MONOSTABILE CON RITORNO A MOLLA

MONOSTABLE SPRING RETURN
 MONOSTABIL MIT FEDERRÜCKSTELLUNG
 MONOSTABLE À RAPPEL PAR RESSORT
 MONOESTABLE CON RETORNO POR MUELLE
 MONOESTÁVEL COM RETORNO POR MOLA



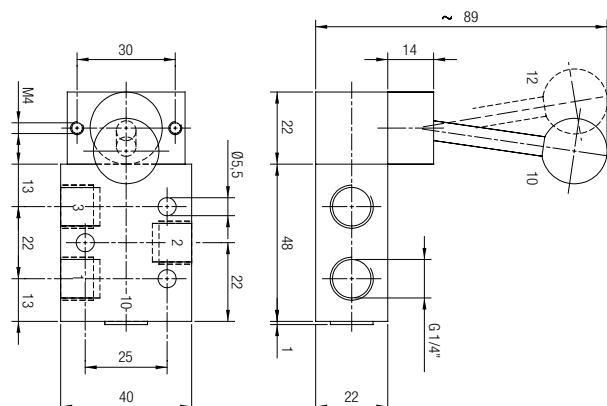
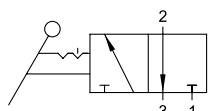
| Codice Code Nummer Code Código Código | Vie Ways Wege Voies Vías Vias | Funzione Function Funktion Fonction Función Funções | Misura Size Größe Dimension Medida Tamanho | Pack. |
|--|--|--|---|-------|
| X1V L0 3 NC 03 | 3/2 | NC | 1/4 | 1 |

X1V L0 3 NC 03 X1V L1 3 00 03

3/2 Vie - Ways - Wege - Voies - Vías - Vias

BISTABILE

TWO STABLE POSITIONS
 BISTABIL
 BISTABLE
 BIESTABLE
 BIESTÁVEL

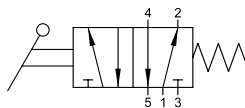


| Codice Code Nummer Code Código Código | Vie Ways Wege Voies Vías Vias | Misura Size Größe Dimension Medida Tamanho | Pack. |
|--|--|---|-------|
| X1V L1 3 NC 03 | 3/2 | 1/4 | 1 |

5/2 Vie - Ways - Wege - Voies - Vías - Vias

MONOSTABILE CON RITORNO A MOLLA

MONOSTABLE SPRING RETURN
 MONOSTABIL MIT FEDERRÜCKSTELLUNG
 MONOSTABLE À RAPPEL PAR RESSORT
 MONOESTABLE CON RETORNO POR MUELLE
 MONOESTÁVEL COM RETORNO POR MOLA



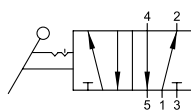
| Codice Code Nummer Code Código Código | Vie Ways Wege Voies Vías Vias | Misura Size Größe Dimension Medida Tamanho | Pack. |
|--|--|---|-------|
| X1V L0 5 00 03 | 5/2 | 1/4 | 1 |



5/2 Vie - Ways - Wege - Voies - Vías - Vias

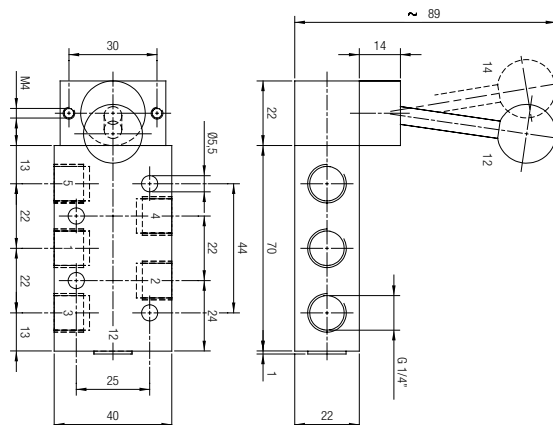
BISTABILE

TWO STABLE POSITIONS
 BISTABIL
 BISTABLE
 BIESTABLE
 BIESTÁVEL



| Codice Code Nummer Code Código Código | Vie Ways Wege Voies Vías Vias | Misura Size Größe Dimension Medida Tamanho | Pack. |
|--|--|---|-------|
| X1V L1 5 00 03 | 5/2 | 1/4 | 1 |

X1V L0 5 00 03 X1V L1 5 00 03



5/3 Vie - Ways - Wege - Voies - Vías - Vias

MONOSTABILE CON RITORNO A MOLLA

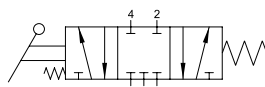
MONOSTABLE SPRING RETURN

MONOSTABIL MIT FEDERRÜCKSTELLUNG

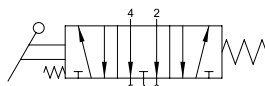
MONOSTABLE À RAPPEL PAR RESSORT

MONOESTABLE CON RETORNO POR MUELLE

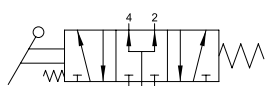
MONOESTÁVEL COM RETORNO POR MOLA



CC



OC



PC



| Codice Code Nummer Code Código Código | Vie Ways Wege Voies Vías Vias | Funzione Function Funktion Fonction Función Funções | Misura Size Größe Dimension Medida Tamanho | Pack. |
|--|--|--|---|-------|
| X1V L0 7 CC 03 | 5/3 | CC | 1/4 | 1 |
| X1V L0 7 OC 03 | 5/3 | OC | 1/4 | 1 |
| X1V L0 7 PC 03 | 5/3 | PC | 1/4 | 1 |

5/3 Vie - Ways - Wege - Voies - Vías - Vias

STABILE A 3 POSIZIONI

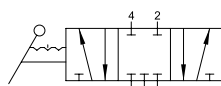
3 STABLE POSITIONS

HEBEL - 3 POSITIONEN

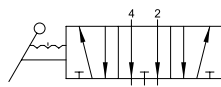
LEVIER - 3 POSITIONS

ESTABLE 3 POSICIONES

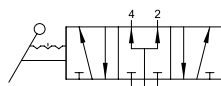
ESTÁVEL DE 3 POSIÇÕES



CC



OC



PC

| | | |
|-----------------------|-----------------------|-----------------------|
| X1V L0 7 CC 03 | X1V L0 7 OC 03 | X1V L0 7 PC 03 |
| X1V L2 7 CC 03 | X1V L2 7 OC 03 | X1V L2 7 PC 03 |

| Codice Code Nummer Code Código Código | Vie Ways Wege Voies Vías Vias | Funzione Function Funktion Fonction Función Funções | Misura Size Größe Dimension Medida Tamanho | Pack. |
|--|--|--|---|-------|
| X1V L2 7 CC 03 | 5/3 | CC | 1/4 | 1 |
| X1V L2 7 OC 03 | 5/3 | OC | 1/4 | 1 |
| X1V L2 7 PC 03 | 5/3 | PC | 1/4 | 1 |

